



Shewaan Abarder
 0760925545
 imaginesales02@gmail.com

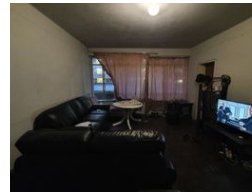
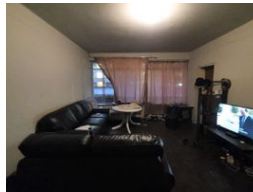
Contact Head Office (JHB,
 Pretoria, Cape Town and Garden
 Route)

+27 712982714

Unit 6 & 8 Rotherfield Trust
 23 Rotherfield Road
 Plumstead
 7800



Web Ref AF-107584



R380,000

 2.5
  1.5
  1

Monthly Bond Repayment R3,922.32

Calculated over 20 years at 11% with no deposit.

Transfer Costs R16,806.00 **Bond Costs** R11,960.00

These calculations are only a guide. Please ask your conveyancer for exact calculations.

Monthly Levy R2,456 **Monthly Rates** R189

A WORK IN PROGRESS!! WITH HUGE EARNING POTENTIAL!!!

Here we have a spacious 87 sqm 2.5 bedroom apartment. This flat needs a bit of work & is located on the 1st floor. With a large sitting room that is perfect for entertaining. The enclosed balcony & main bedroom was locked upon the evaluation but will be made available upon viewing. The kitchen is fitted but needs some TLC. The separate bathroom & toilet makes this unit perfect for being multi-tenanted.

This apartment block has a spacious reception at the entrance. The lifts are in working condition. The security guards are on-site 24hrs. Access into the block is controlled with the use of a tag.

The building is located on Troye Street within walking distance of basic amenities such as Barclays square, Sunnyside primary school, UNISA, and Sasol garage, and with good access to transport.

Estimated Monthly Rental – R 6...

Features

Interior

Bedrooms	2.5
Bathrooms	1.5
Recep. Rooms	1

Exterior

Garages	1
Security	Yes
Pool	No

Sizes

Floor Size	87m²
------------	------