

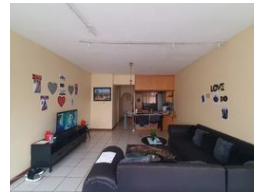
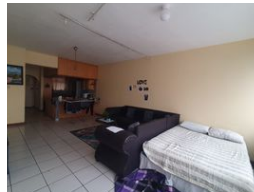


Shewaan Abarder
0760925545
imaginesales02@gmail.com



Contact Head Office (JHB,
Pretoria, Cape Town and Garden
Route)

+27 712982714

Unit 6 & 8 Rotherfield Trust
23 Rotherfield Road
Plumstead
7800



R540,000

 2.5  1

Monthly Bond Repayment R5,482.24

Calculated over 20 years at 10.75% with no deposit.

Transfer Costs R21,217.00 **Bond Costs** R15,795.00

These calculations are only a guide. Please ask your conveyancer for exact calculations.

Monthly Levy R1,985 **Monthly Rates** R251

CHARMING FAMILY APPEAL!!! WITH ENDLESS POSSIBILITIES!!!

Here we have a spacious 95 sqm 2.5 bedroom apartment. This flat is in good condition on the 4th floor, with a large sitting room that is ideal for entertaining. The enclosed balcony is being used as a half-room. The main bedroom is huge and has built-in cupboards. The kitchen and bathroom are neatly fitted and fully tiled.

This apartment block has a spacious reception at the entrance. The security guards are on-site 24hrs. Access into the block is controlled with the use of a tag.

The building is located on Leyds Street, within walking distance of basic amenities such as Barclays Square, Sunnyside Primary School, UNISA, and Sasol garage, and with good access to transport.

Estimated Monthly Rental – R 6 000 – R 7 000 per month.

Estimated Monthly Levy – R 1 985.55 per month.

Features

Interior

Bedrooms	2.5
Bathrooms	1
Recep. Rooms	1

Exterior

Carports / Parkings	1
Security	Yes
Pool	No

Sizes

Floor Size	95m ²
------------	------------------