



Shewaan Abarder
0760925545
imaginesales02@gmail.com

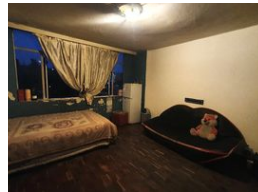
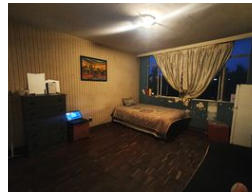
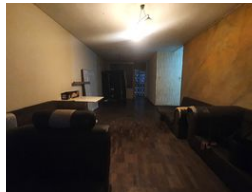
Contact Head Office (JHB,
Pretoria, Cape Town and Garden
Route)

+27 712982714

Unit 6 & 8 Rotherfield Trust
23 Rotherfield Road
Plumstead
7800



Web Ref BB-109134



R895,000

4 1.5

Monthly Bond Repayment R9,086.30

Calculated over 20 years at 10.75% with no deposit.

Transfer Costs R28,244.00 **Bond Costs** R21,450.00

These calculations are only a guide. Please ask your conveyancer for exact calculations.

Monthly Levy R1,834 **Monthly Rates** R292

3.5 BEDROOMS, THIS IS AN INVESTORS DREAM!!!

119sqm boasting with 3.5 bedrooms with a bathroom and a separate toilet.,The kitchen is neatly fitted, there are also built-in cupboards inside the flat as well.

The block has 24-hrs security with the entrance controlled by the use of a code so it's secure.

The apartment block is located corner of Leyds and De Rapper street, within walking distance of basic amenities such as roman pizza and other restaurants, Shoprite Esselen, and good access to transport

Estimated Levy: R 1 834 per month

Estimated Rental: R 9 000 - R 12 000 per month.

Features

Interior

Bedrooms	4
Bathrooms	1.5
Recep. Rooms	1

Exterior

Carports / Parkings	1
Security	Yes
Pool	No

Sizes

Floor Size	119m²
------------	-------