

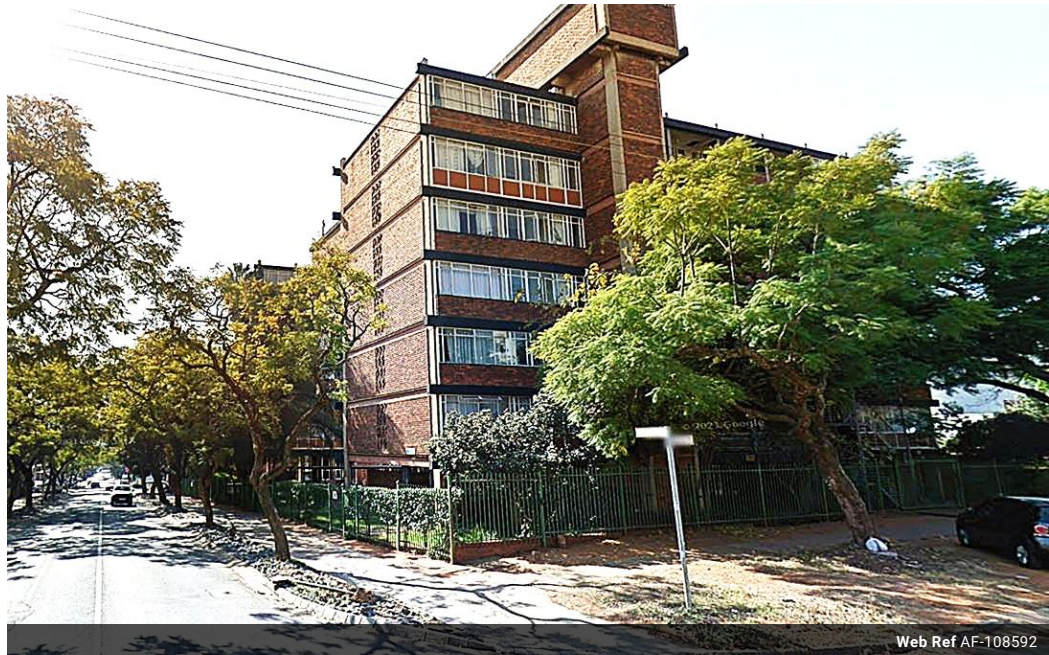


Shewaan Abarder
0760925545
imaginesales02@gmail.com

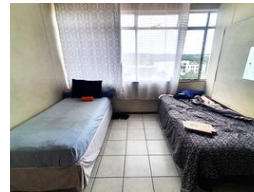
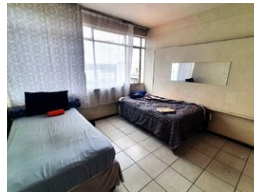
Contact Head Office (JHB,
Pretoria, Cape Town and Garden
Route)

+27 712982714

Unit 6 & 8 Rotherfield Trust
23 Rotherfield Road
Plumstead
7800



Web Ref AF-108592



R470,000

2 1 1

Monthly Bond Repayment R4,771.58

Calculated over 20 years at 10.75% with no deposit.

Transfer Costs R19,049.00 **Bond Costs** R13,910.00

These calculations are only a guide. Please ask your conveyancer for exact calculations.

Monthly Levy R2,325 **Monthly Rates** R215

2 BEDROOM PLUS 1 PARTITIONED ROOM FOR EXTRA RENTAL INCOME!

Spacious and well maintained 74 sqm 2 Bedroom property with half of the lounge partitioned into an additional bedroom for extra rental income and making it a 3 bedroom.. The apartment is equipped with a fitted kitchen, spacious lounge area with a bath with toilet. The unit has plenty of room space for added comfort. This flat is on the 5th floor and the lifts in the building are in good working order making it easily accessible.

The block is located on the corner of Johnston and Reitz Street, adjacent to Midcity House on Reitz Street, this is close to other amenities such shopping malls, Jacaranda Hospitals, children parks, with good access to transport on both sides of the street and its close to TUKS.

Levy: R 2 893 per month.

Estimated Rental: R 7 800 – R 9 000 per month.

Features

Interior

Bedrooms	2
Bathrooms	1
Recep. Rooms	1

Exterior

Garages	1
Security	Yes
Pool	No

Sizes

Floor Size	74m²
------------	------