

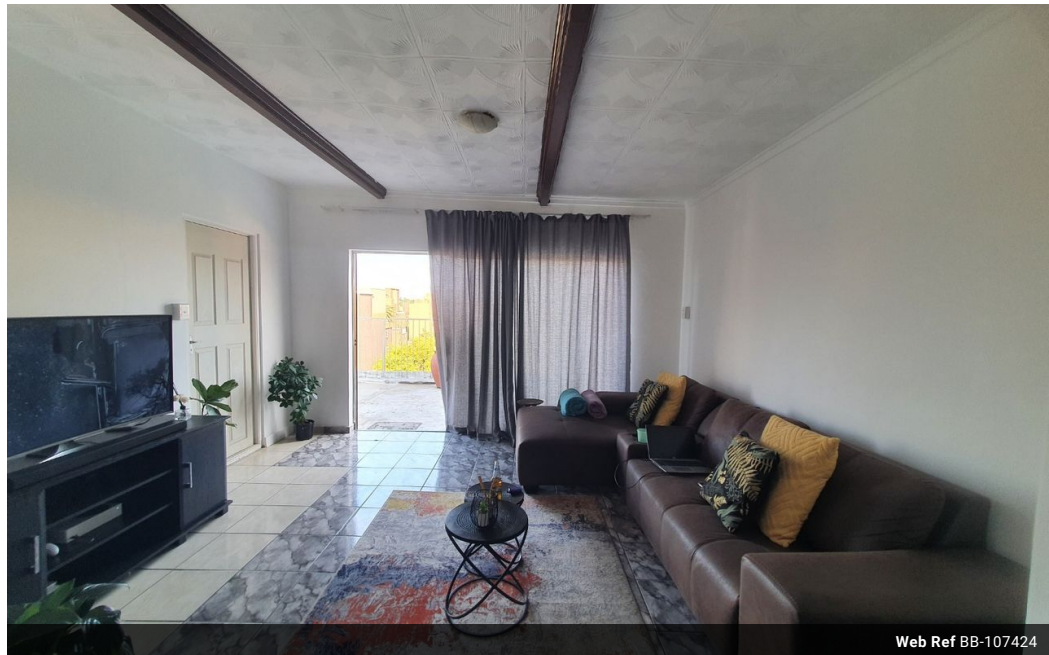


Shewaan Abarder
 0760925545
 imaginesales02@gmail.com

Contact Head Office (JHB,
 Pretoria, Cape Town and Garden
 Route)

+27 712982714

Unit 6 & 8 Rotherfield Trust
 23 Rotherfield Road
 Plumstead
 7800



Web Ref BB-107424



R495,000

 2  1

Monthly Bond Repayment R5,109.33

Calculated over 20 years at 11% with no deposit.

Transfer Costs R19,049.00 **Bond Costs** R13,910.00

These calculations are only a guide. Please ask your conveyancer for exact calculations.

Monthly Levy R2,200 **Monthly Rates** R246

IDEAL PENTHOUSE LIVING!!! WITH THE VIEW TO MATCH!!!

Here is a spacious 79 sqm, 1.5 bedroom penthouse apartment on the 6th floor. It is in good condition, with a large sitting room .enclosed balcony which is used as a half room. The main bedroom is very big and has built-in cupboards. The kitchen is neatly fitted. The open balcony is ideal for relaxing.

This apartment block has a spacious reception at the entrance. The lifts are in working condition. Access into the block is controlled with the use of a tag.

The building is located on Reitz Street, within walking distance of basic amenities such as Barclays Square, Sunnyside Primary School, UNISA, and Sasol garage, and with good access to transport.

Estimated Monthly Rental – R 6 000 – R 7 000 per month.

Estimated Monthly Levy – R 2 200 per month.

Features

Interior		Exterior		Sizes	
Bedrooms	2	Carports / Parkings	1	Floor Size	79m²
Bathrooms	1	Security	Yes		
Recep. Rooms	1	Pool	No		