



**Shewaan Abarder**  
0760925545  
imaginesales02@gmail.com

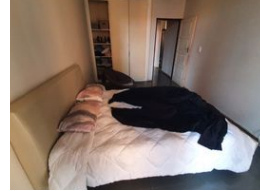
Contact Head Office (JHB,  
Pretoria, Cape Town and Garden  
Route)

**+27 712982714**

Unit 6 & 8 Rotherfield Trust  
23 Rotherfield Road  
Plumstead  
7800



Web Ref AF-104858



**R465,000**

2 1.5

**Monthly Bond Repayment** R4,799.68

Calculated over 20 years at 11% with no deposit.

**Transfer Costs** R19,049.00 **Bond Costs** R13,910.00

These calculations are only a guide. Please ask your conveyancer for exact calculations.

**Monthly Levy** R1,883 **Monthly Rates** R164

**YOU CAN AFFORD TO DWELL WELL!!!**

Here we have a spacious 75 sqm 2 bedroom apartment. This flat is in good condition on the 1st floor. It has a large sitting room ideal for entertaining. The main bedroom is huge and has built-in cupboards. The kitchen is neatly fitted. The separate bathroom & toilet make the unit ideal for being multi-tenanted.

This apartment block has a spacious reception at the entrance. The lifts are in working condition. The security guards are on-site 24hrs. Access into the block is controlled with the use of a tag.

The building is located on Jorissen Street, within walking distance of basic amenities such as Barclays Square, Sunnyside Primary School, UNISA, and Sasol garage, and it has good access to transport.

Estimated Monthly Rental – R 6 000 – R 7 000 per month.

Estimated Monthly Levy – R 1 883.68 per month.

## Features

### Interior

Bedrooms	2
Bathrooms	1.5
Recep. Rooms	1

### Exterior

Carports / Parkings	1
Security	Yes
Pool	No

### Sizes

Floor Size	75m²
------------	------

