



Shewaan Abarder
0760925545
imaginesales02@gmail.com

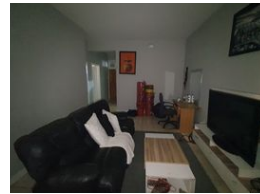
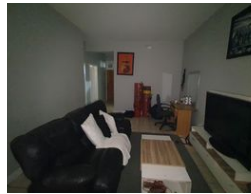
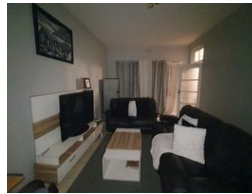
Contact Head Office (JHB,
Pretoria, Cape Town and Garden
Route)

+27 712982714

Unit 6 & 8 Rotherfield Trust
23 Rotherfield Road
Plumstead
7800



Web Ref BB-107845



R385,000

 1.5  1

Monthly Bond Repayment R3,908.63

Calculated over 20 years at 10.75% with no deposit.

Transfer Costs R16,806.00 **Bond Costs** R11,960.00

These calculations are only a guide. Please ask your conveyancer for exact calculations.

Monthly Levy R1,272 **Monthly Rates** R158

READY TO INVEST OR MOVE IN!!!

Here we have a spacious 63 sqm 1.5 bedroom apartment. This flat is in good condition on the ground floor. It has a large sitting room ideal for entertaining. The enclosed balcony is being used as a half-room. The main bedroom is huge and has built-in cupboards. The kitchen is neatly fitted.

This apartment block has a spacious reception at the entrance. Access into the block is controlled with the use of a tag.

The building is located on Kotze Street, within walking of basic amenities such as Barclays Square, Sunnyside Primary School, UNISA, Sasol garage, and good transport access.

Estimated Monthly Rental – R 5 500 – R 6 500 per month.

Estimated Monthly Levy – R 1 272.41 per month.

Features

Interior

Bedrooms	1.5
Bathrooms	1
Recep. Rooms	1

Exterior

Carports / Parkings	1
Security	Yes
Pool	No

Sizes

Floor Size	63m²
------------	------