

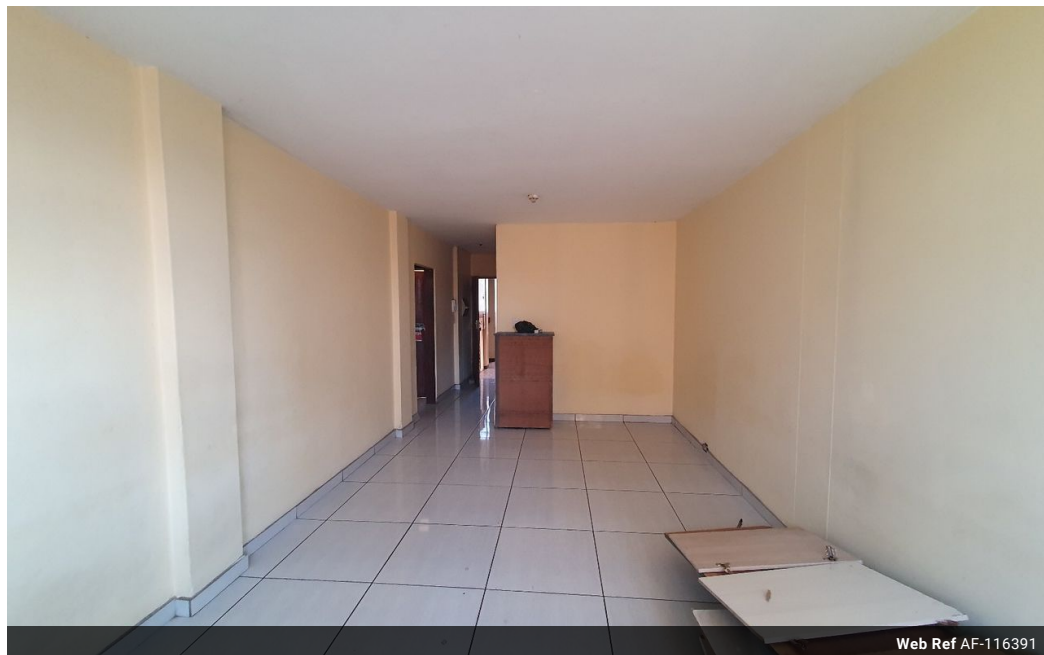


Shewaan Abarder
0760925545
imaginesales02@gmail.com

Contact Head Office (JHB,
Pretoria, Cape Town and Garden
Route)

+27 712982714

Unit 6 & 8 Rotherfield Trust
23 Rotherfield Road
Plumstead
7800



Web Ref AF-116391



R530,000

2 1

Monthly Bond Repayment R5,470.60

Calculated over 20 years at 11% with no deposit.

Transfer Costs R21,217.00 **Bond Costs** R15,795.00

These calculations are only a guide. Please ask your conveyancer for exact calculations.

Monthly Levy R2,645 **Monthly Rates** R225

THE PROPERTY THAT SHOWS PROMISE!!! WITH GOOD RETURNS!!!

Here we have a spacious 64 sqm 2 bedroom apartment. This flat is in good condition on the 4th floor, with a large sitting room ideal for entertaining. Both bedrooms have built-in cupboards and are very big. The kitchen is neatly fitted.

This apartment block has a spacious reception at the entrance. The lifts are in working condition. The security guards are on-site 24hrs. Access into the block is controlled with the use of a tag.

The building is located on Johnston Street, within walking distance of basic amenities such as Sunnyside Primary School, Sunnyside Swimming Pool, Shoprite Esselen, UNISA, and Sasol garage, and with good access to transport.

Estimated Monthly Rental – R 5 500 – R 6 500 per month.

Estimated Monthly Levy – R 2 645 per month.

Features

Interior

Bedrooms	2
Bathrooms	1
Recep. Rooms	1

Exterior

Carparks / Parkings	1
Security	Yes
Pool	No

Sizes

Floor Size	64m ²
------------	------------------