

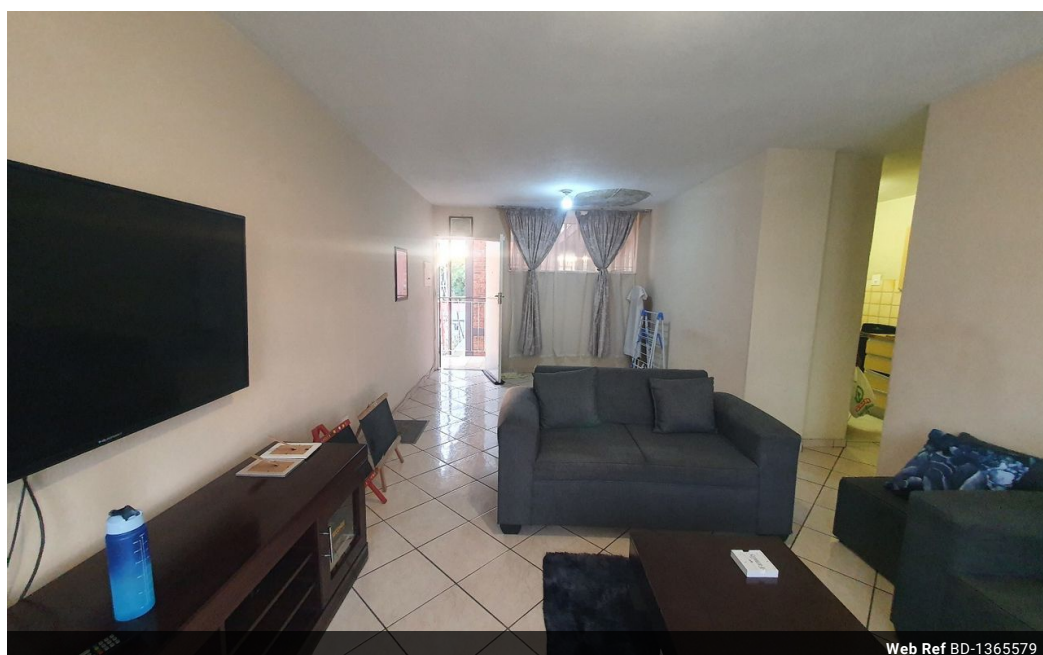


Shewaan Abarder
 0760925545
 imaginesales02@gmail.com

Contact Head Office (JHB,
 Pretoria, Cape Town and Garden
 Route)

+27 712982714

Unit 6 & 8 Rotherfield Trust
 23 Rotherfield Road
 Plumstead
 7800



Web Ref BD-1365579



R510,000

 2  1.5

Monthly Bond Repayment R5,264.16

Calculated over 20 years at 11% with no deposit.

Transfer Costs R21,217.00 **Bond Costs** R15,795.00

These calculations are only a guide. Please ask your conveyancer for exact calculations.

Monthly Levy R1,447 **Monthly Rates** R401

A 2 BEDROOM STUNNER!!! CALLING ALL INVESTORS!!!

Here we have a spacious 81 sqm 2 bedroom apartment. This flat is in great condition on the 4th floor. With a large lounge area ideal for entertaining. The unit is fully tiled. The main bedroom is big with built-in cupboards. The other bedroom is a nice size & is also fitted with built-in cupboards. The kitchen is neatly fitted. There is a separate bathroom & toilet perfect for being multi-tenanted. It also has an exclusive use parking bay.

This apartment block has a spacious reception at the entrance. The lifts are in working condition. Access into the block is controlled with the use of a tag.

The building is located on Jasmyn Street Silverton, within walking distance of basic amenities such as Silver Mall, SPAR Silverton, Shoprite Silverton, Silverton High School, and with good access to public transport.

Estimated...

Features

Interior

Bedrooms	2
Bathrooms	1.5
Recep. Rooms	1

Exterior

Carports / Parkings	1
Security	Yes
Pool	No

Sizes

Floor Size	81m²
------------	------