



Shewaan Abarder
 0760925545
 imaginesales02@gmail.com

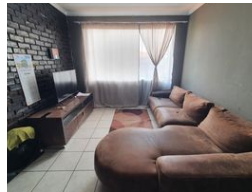
Contact Head Office (JHB,
 Pretoria, Cape Town and Garden
 Route)

+27 712982714

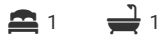
Unit 6 & 8 Rotherfield Trust
 23 Rotherfield Road
 Plumstead
 7800



Web Ref BB-1369786



R355,000



Monthly Bond Repayment R3,604.06

Calculated over 20 years at 10.75% with no deposit.

Transfer Costs R16,806.00 **Bond Costs** R11,960.00

These calculations are only a guide. Please ask your conveyancer for exact calculations.

Monthly Levy R1,383

LUXURY MEETS CONVENIENCE !!!!!

Spacious 48 sqm 1 bedroom apartment in good condition situated on the 3rd floor has a large sitting room, a bedroom with an en-suite bathroom and built-in cupboards, and a neatly fitted kitchen.

The apartment block has a neat reception area at the entrance. The security guards are on-site 24hrs. Access to the block is granted with the use of a tag.

Luttighoff is located at Maltzan Street, PRETORIA WEST, Street, within walking distance to basic amenities such as Champion Cash, Pilditch stadium, and Cash Build, and with good access to transport.

Estimated Monthly Rental – R 4 000 – R 4 500 per month.

Estimated Monthly Levy – R 1 383.44 per month.

Features

Interior

Bedrooms	1
Bathrooms	1
Recep. Rooms	1

Exterior

Carports / Parkings	1
Security	Yes
Pool	No

Sizes

Floor Size	48m²
------------	------