



Shewaan Abarder
0760925545
imaginesales02@gmail.com

Contact Head Office (JHB,
Pretoria, Cape Town and Garden
Route)

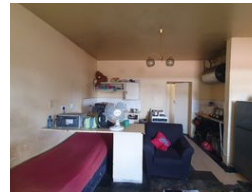
+27 712982714

Unit 6 & 8 Rotherfield Trust
23 Rotherfield Road
Plumstead
7800


SOLD



Web Ref BD-879171



R235,000

 0.5  1

Monthly Bond Repayment R2,385.79

Calculated over 20 years at 10.75% with no deposit.

Transfer Costs R13,821.00

Bond Costs R9,510.00

These calculations are only a guide. Please ask your conveyancer for exact calculations.

Monthly Levy R1,188

Monthly Rates R15

THE SAFE INVESTMENT!!! WITH STABLE RETURNS!!!

Here we have a spacious 43 sqm bachelor pad. This flat is in fair condition on the 2nd floor, with an open-plan kitchen.

This apartment block has a spacious reception at the entrance. The lifts are in a working condition. Access to the block is controlled with the use of a tag.

The block is located on Nkomo Street Pretoria West, within walking distance of basic amenities such as Quagga Shopping Centre, Pilditch Stadium, McDonald's, Department Of Home Affairs, and good public transport access.

Estimated Monthly Rental – R 4 000 – R 4 500 per month.

Estimated Monthly Levy – R 1 188.93 per month.

Features

Interior

Bedrooms	0.5
Bathrooms	1

Exterior

Carports / Parkings	1
Security	Yes
Pool	No

Sizes

Floor Size	43m ²
------------	------------------