



**Shewaan Abarder**  
0760925545  
imaginesales02@gmail.com

Contact Head Office (JHB,  
Pretoria, Cape Town and Garden  
Route)

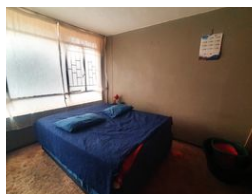
**+27 712982714**

Unit 6 & 8 Rotherfield Trust  
23 Rotherfield Road  
Plumstead  
7800

**SOLD**



Web Ref BB-121014



**R495,000**

 2  1.5

**Monthly Bond Repayment** R5,025.38

Calculated over 20 years at 10.75% with no deposit.

**Transfer Costs** R19,049.00 **Bond Costs** R13,910.00

These calculations are only a guide. Please ask your conveyancer for exact calculations.

**Monthly Levy** R2,578 **Monthly Rates** R235

## TWO BEDROOM PARTITIONED INTO A THIRD FOR EXTRA RENTAL INCOME

Spacious and entertaining 67sqm 2 bedroom apartment. This property is in fair condition on the 3rd floor. With a large sitting room that has been partitioned into an extra bedroom. Essentially making this a 3-bedroom apartment. This is a bonus for extra rental income. The main bedroom is very big and has built-in cupboards. The kitchen is neatly fitted. The separate bathroom & toilet make this unit ideal for being multi-tenanted. The open balcony is ideal for relaxing after a long day's work.

This apartment block has a spacious reception at the entrance. The lifts are in working condition. The security guards are on-site 24hrs. Access into the block is controlled with the use of a tag.

The building is located at Scheiding Street PTA Central, within walking distance of basic amenities such as Mr. Price, Chicken Licken...

## Features

### Interior

|              |     |
|--------------|-----|
| Bedrooms     | 2   |
| Bathrooms    | 1.5 |
| Recep. Rooms | 1   |

### Exterior

|                     |     |
|---------------------|-----|
| Carports / Parkings | 1   |
| Security            | Yes |
| Pool                | No  |

### Sizes

|            |                  |
|------------|------------------|
| Floor Size | 67m <sup>2</sup> |
|------------|------------------|