

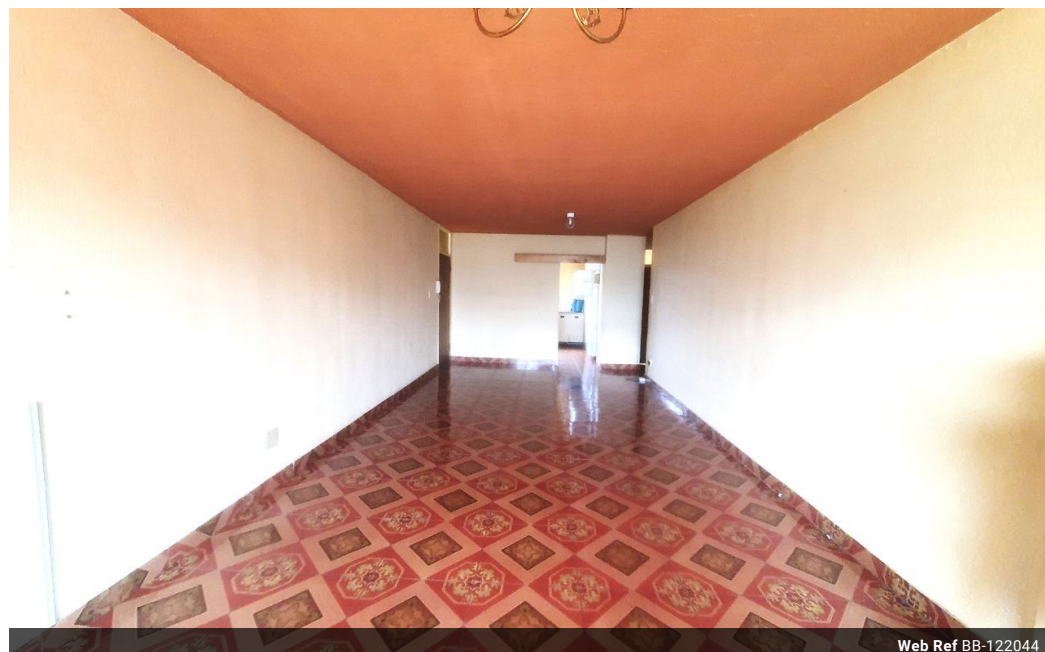


Shewaan Abarder
0760925545
imaginesales02@gmail.com

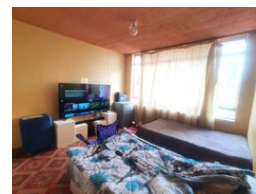
Contact Head Office (JHB,
Pretoria, Cape Town and Garden
Route)

+27 712982714

Unit 6 & 8 Rotherfield Trust
23 Rotherfield Road
Plumstead
7800



Web Ref BB-122044



R665,000

3 2 1

Monthly Bond Repayment R6,751.27

Calculated over 20 years at 10.75% with no deposit.

Transfer Costs R23,730.00 **Bond Costs** R17,680.00

These calculations are only a guide. Please ask your conveyancer for exact calculations.

Monthly Levy R1,217 **Monthly Rates** R266

THREE BEDROOM WONDER IN GOOD CONDITION

Here at KLINKENBERG GARDENS we have a spacious 108 sqm with a 3 bedroom apartment. This flat is in good condition on the 6th floor. With a large sitting room ideal for entertaining. The bedrooms are big & are fitted with built in cupboards. The kitchen is neatly fitted.

This apartment block has a spacious reception at the entrance. The lifts are in working condition. The security guards are on-site 24hrs. Access into the block is controlled with the use of a tag.

The building is located on the Corner of Visagie & Kotze Street within walking distance of basic amenities such as Sunnypark Shopping Centre, Springfield TVET College, Hamilton Primary School, and Pretoria Secondary School, and with good access to transport.

Estimated Monthly Rental – R 8 500 – R 12 500 per month.

Estimated Monthly Levy – R 1 217 per month.

Features

Interior		Exterior		Sizes	
Bedrooms	3	Garages	1	Floor Size	108m²
Bathrooms	2	Security	Yes		
Recep. Rooms	1	Pool	No		