

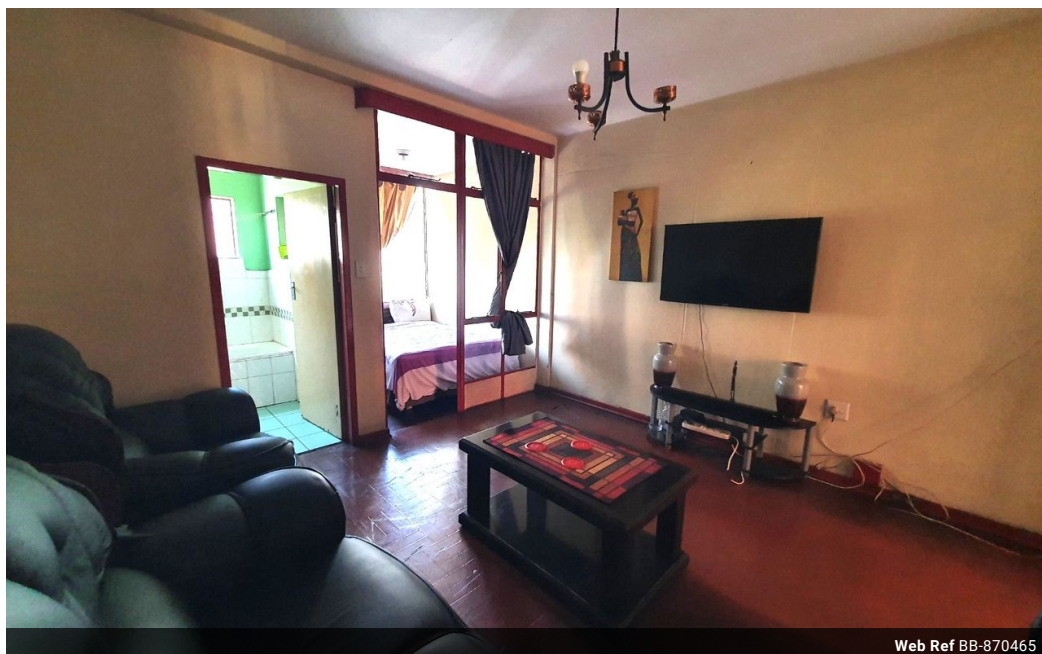


Shewaan Abarder
 0760925545
 imaginesales02@gmail.com

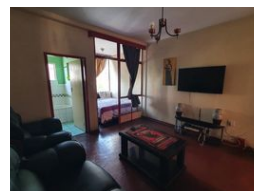
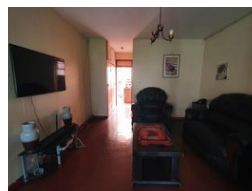
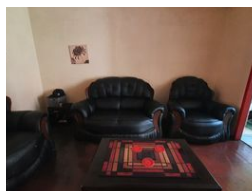
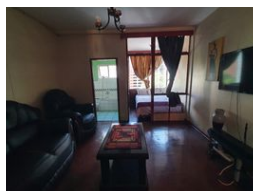
Contact Head Office (JHB,
 Pretoria, Cape Town and Garden
 Route)

+27 712982714

Unit 6 & 8 Rotherfield Trust
 23 Rotherfield Road
 Plumstead
 7800



Web Ref BB-870465



R295,000

 0.5  1

Monthly Bond Repayment R2,994.93

Calculated over 20 years at 10.75% with no deposit.

Transfer Costs R15,517.00 **Bond Costs** R10,985.00

These calculations are only a guide. Please ask your conveyancer for exact calculations.

Monthly Levy R960 **Monthly Rates** R35

COZY!!! LOW RISK!!! LOW LEVY!!!

Here we have a spacious 36 sqm bachelor apartment on the 3rd floor. It is in good condition and has an enclosed balcony that is being used as a half-room. The kitchen is neatly fitted.

This apartment block has a spacious reception at the entrance. The lifts are in working condition. The security guards are on-site 24hrs. Access into the block is controlled with the use of a tag.

The building is located on Sophie De Bruyn Street. Pretoria Central, within walking distance to basic amenities such as Pretoria Central Police Station, Tshwane North TVET College, Mc Donalds Skinner Street, Department Of Home Affairs Shoprite Usave, Engen Garage, and with good access to transport.

Estimated Monthly Rental – R 3 500 – R 4 500 per month.

Estimated Monthly Levy – R 960.28 per month.

Features

Interior

Bedrooms	0.5
Bathrooms	1
Recep. Rooms	0.5

Exterior

Carports / Parkings	1
Security	Yes
Pool	No

Sizes

Floor Size	36m²
------------	------

