



Shewaan Abarder
0760925545
imaginesales02@gmail.com

Contact Head Office (JHB,
Pretoria, Cape Town and Garden
Route)

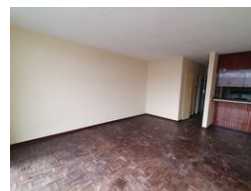
+27 712982714

Unit 6 & 8 Rotherfield Trust
23 Rotherfield Road
Plumstead
7800



SOLD



Web Ref BD-871427



R280,000

 0.5  1

Monthly Bond Repayment R2,890.13
Calculated over 20 years at 11% with no deposit.

Transfer Costs R15,517.00 **Bond Costs** R10,985.00

These calculations are only a guide. Please ask your conveyancer for exact calculations.

Monthly Levy R605 **Monthly Rates** R51

COMMUTERS DREAM !!! WITH LOW LEVY !!!

Here we have a spacious 37 sqm studio apartment. This flat is in good condition on the 8th floor. The space can easily be separated for privacy. The kitchen is neatly fitted.

This apartment block has a spacious reception at the entrance. The lifts are in working condition. The security guards are on-site 24hrs. Access into the block is controlled with the use of a tag.

The building is located corner of Minnaar and Thabo Sehume Street, close to basic amenities such as KFC, a spaza shop, Buguers Park, a petrol station and close to public transport making it ideal for commuting to work.

Estimated Monthly Rental – R 3 000 – R 4 000 per month.

Estimated Monthly Levy – R 605.06 per month.

Features

Interior		Exterior		Sizes	
Bedrooms	0.5	Carports / Parkings	1	Floor Size	37m ²
Bathrooms	1	Security	Yes		
Recep. Rooms	0.5	Pool	No		