



Shewaan Abarder
0760925545
imaginesales02@gmail.com

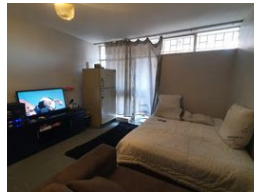
Contact Head Office (JHB,
Pretoria, Cape Town and Garden
Route)

+27 712982714

Unit 6 & 8 Rotherfield Trust
23 Rotherfield Road
Plumstead
7800



Web Ref BB-1364880



R525,000

2 1

Monthly Bond Repayment R5,329.95

Calculated over 20 years at 10.75% with no deposit.

Transfer Costs R21,217.00 **Bond Costs** R15,795.00

These calculations are only a guide. Please ask your conveyancer for exact calculations.

Monthly Levy R1,627 **Monthly Rates** R267

It's All About The Address

This massive spacious 91 sqm two-bedroom is in decent condition this unit consists of built-in cupboards in the main bedroom. The spacious lounge area is partitioned to create extra bedrooms in order to increase the monthly rental of the unit, however, partitioning can still be removed should one wish to. The kitchen is fitted and the bathroom comes with a toilet facility, bathtub, and shower. It is currently generating a monthly rental of R 8300.

This decent building is set just 2 blocks away from the corner of Lillian Ngoyi and Minnaar Street. Close to basic amenities such as Shops, Pretoria Secondary School, Hamilton Primary School, Burgers Park, Visagie Police Station and just walking distance of public transport.

Estimated Levy: R 1 628 per month.

Estimated Rental: R 6 000 – R 8 300 per month.

Features

Interior

Bedrooms	2
Bathrooms	1
Recep. Rooms	1

Exterior

Carparks / Parkings	1
Security	Yes
Pool	No

Sizes

Floor Size	91m ²
------------	------------------