



Shewaan Abarder
 0760925545
 imaginesales02@gmail.com

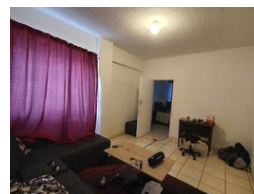
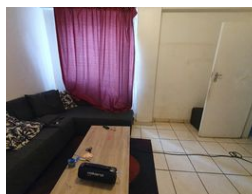
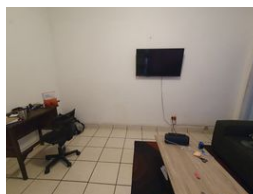
Contact Head Office (JHB,
 Pretoria, Cape Town and Garden
 Route)

+27 712982714

Unit 6 & 8 Rotherfield Trust
 23 Rotherfield Road
 Plumstead
 7800



Web Ref BB-119645



R295,000

 0.5  1

Monthly Bond Repayment R2,994.93

Calculated over 20 years at 10.75% with no deposit.

Transfer Costs R15,517.00 **Bond Costs** R10,985.00

These calculations are only a guide. Please ask your conveyancer for exact calculations.

Monthly Levy R883 **Monthly Rates** R111

IDEAL FOR THE FIRST TIME INVESTOR!!!

Here is a spacious 38 sqm bachelor pad. The flat is on the ground floor and is in good condition. The enclosed balcony is being used as a half-room. The kitchen is neatly fitted.

This apartment block has a spacious reception at the entrance. Access into the block is controlled with the use of a tag.

The building is located on Loveday Street, within walking distance of basic amenities such as Barclays Square, Sunnyside Primary School, UNISA, and Sasol Garage, and with good access to transport.

Estimated Monthly Rental – R 4 000 – R 4 500 per month.

Estimated Monthly Levy – R 883.99 per month.

Features

Interior

Bedrooms	0.5
Bathrooms	1
Recep. Rooms	0.5

Exterior

Carports / Parkings	1
Security	Yes
Pool	No

Sizes

Floor Size	38m ²
------------	------------------