



Shewaan Abarder
0760925545
imaginesales02@gmail.com

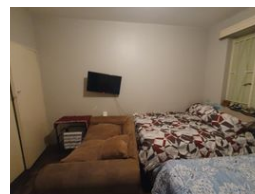
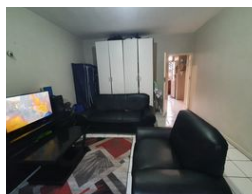
Contact Head Office (JHB,
Pretoria, Cape Town and Garden
Route)

+27 712982714

Unit 6 & 8 Rotherfield Trust
23 Rotherfield Road
Plumstead
7800



Web Ref BD-104266



R410,000

1.5 1.5

Monthly Bond Repayment R4,231.97

Calculated over 20 years at 11% with no deposit.

Transfer Costs R17,928.00 **Bond Costs** R12,935.00

These calculations are only a guide. Please ask your conveyancer for exact calculations.

Monthly Levy R1,474 **Monthly Rates** R133

THE PROPERTY THAT SHOWS PROMISE!!! WITH GOOD RETURNS!!!

Here we have a spacious 64 sqm 1.5 bedroom apartment. This flat is in good condition on the 1st floor. The spacious lounge is ideal for entertaining. The main bedroom is fully tiled with built-in cupboards & the enclosed balcony is used as a half room. The kitchen is neatly fitted. The unit comes with an exclusive-use parking bay. The separate bathroom & toilet make the unit perfect for being multi-tenanted.

This apartment block has a spacious reception at the entrance. The lifts are in working condition. Access into the block is controlled with the use of a tag.

The building is located on Walker Street, within walking distance of basic amenities such as Engen Millenium Walker, Sunnyside primary school, UNISA, and Sasol garage, and it has good access to transport.

Estimated Monthly Rental – R 4 500 – R 5 500 per...

Features

Interior

| | |
|--------------|-----|
| Bedrooms | 1.5 |
| Bathrooms | 1.5 |
| Recep. Rooms | 1 |

Exterior

| | |
|---------------------|-----|
| Carports / Parkings | 1 |
| Security | Yes |
| Pool | No |

Sizes

| | |
|------------|------------------|
| Floor Size | 66m ² |
|------------|------------------|

