

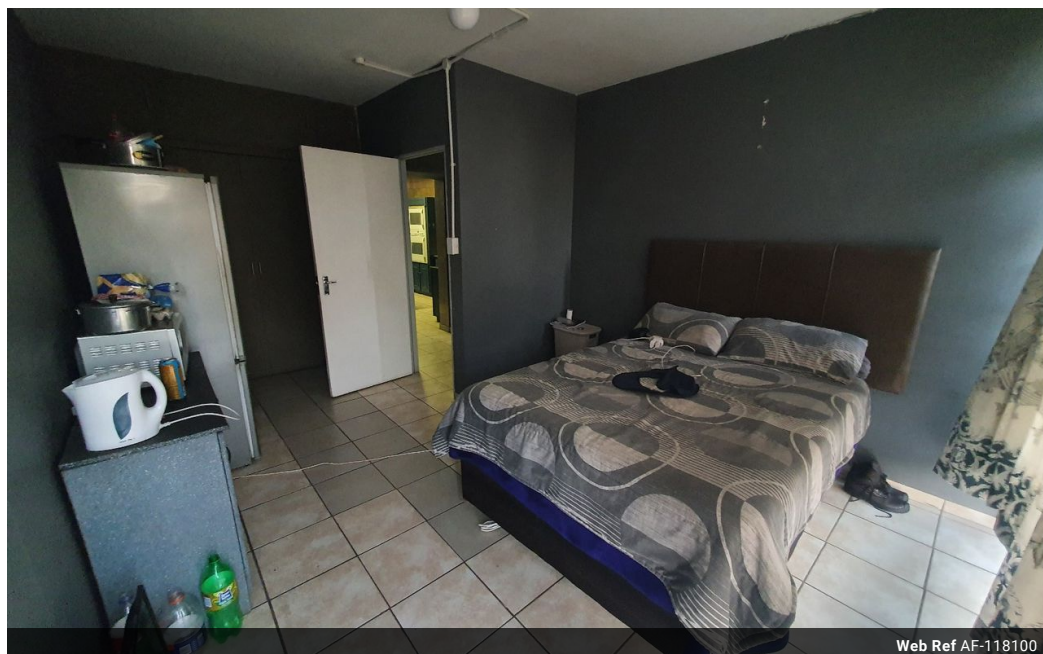


Shewaan Abarder
0760925545
imaginesales02@gmail.com

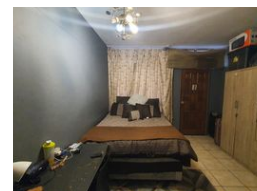
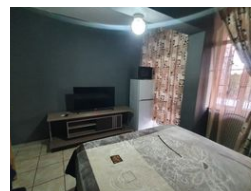
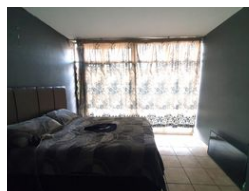
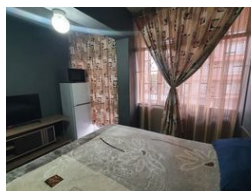
Contact Head Office (JHB,
Pretoria, Cape Town and Garden
Route)

+27 712982714


Unit 6 & 8 Rotherfield Trust
23 Rotherfield Road
Plumstead
7800



Web Ref AF-118100



R540,000

 2  2

Monthly Bond Repayment R5,573.82

Calculated over 20 years at 11% with no deposit.

Transfer Costs R21,217.00 **Bond Costs** R15,795.00

These calculations are only a guide. Please ask your conveyancer for exact calculations.

Monthly Levy R2,971 **Monthly Rates** R15

SPACIOUS MODERN LIVING WITH GOOD RENTAL YIELD!!!

Spacious 114 sqm original 2 bedroom apartment that has been professionally partitioned into 4 bedrooms. The main bedroom has an en suite. The lounge area has been transformed into a bedroom. The bedrooms are a nice size. The unit is fully tiled. The 2 bathrooms make this unit ideal for being multi-tenanted. The kitchen is neatly fitted and very modern with an island in the centre.

This apartment block is in good condition. The lifts are in a working condition. Access into the block is controlled by the use of a remote control security gate.

The block is located close to the corner of Loop and Scheiding Street next to the Caltex garage, Manhattan hotel, and within walking distance to all amenities such as Sunnyside Primary School, Pretoria Primary School close to Bosman Station. UNISA is just a stone throw away and it has...

Features

Interior

Bedrooms	2
Bathrooms	2
Recep. Rooms	1

Exterior

Carports / Parkings	1
Security	Yes
Pool	No

Sizes

Floor Size	114m ²
------------	-------------------