

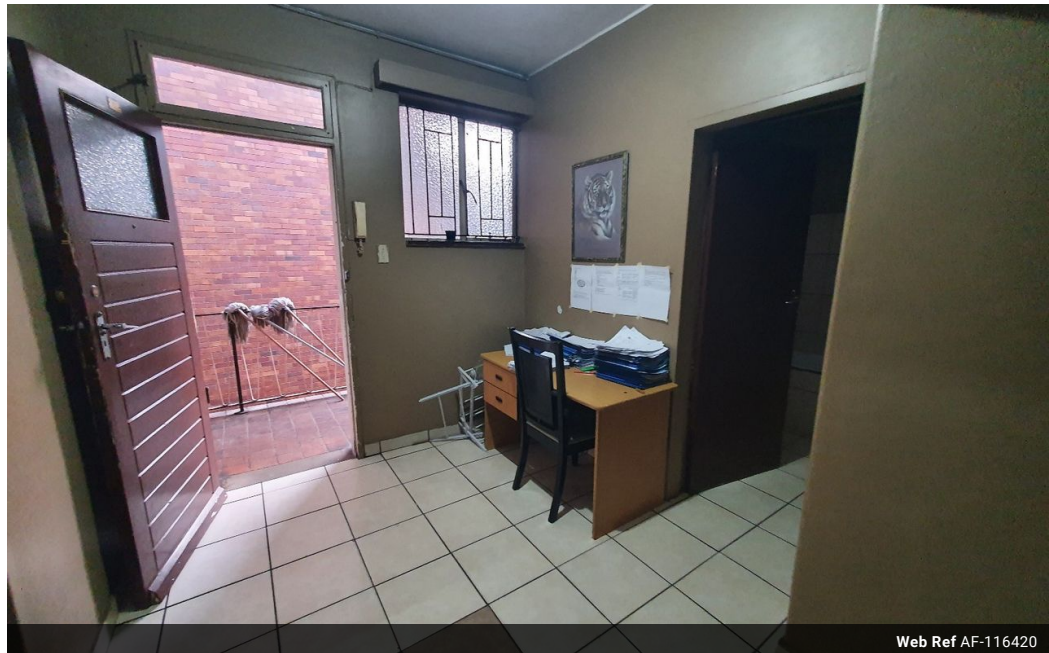


Shewaan Abarder
0760925545
imaginesales02@gmail.com

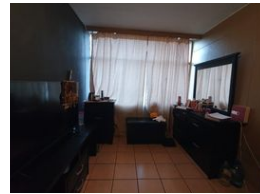
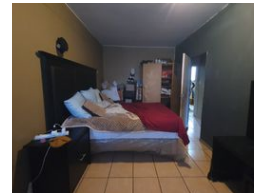
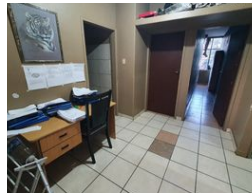
Contact Head Office (JHB,
Pretoria, Cape Town and Garden
Route)

+27 712982714

Unit 6 & 8 Rotherfield Trust
23 Rotherfield Road
Plumstead
7800



Web Ref AF-116420



R475,000

 1.5  1

Monthly Bond Repayment R4,822.34

Calculated over 20 years at 10.75% with no deposit.

Transfer Costs R19,049.00 **Bond Costs** R13,910.00

These calculations are only a guide. Please ask your conveyancer for exact calculations.

Monthly Levy R1,436 **Monthly Rates** R205

CALLING ALL INVESTORS!!! MAKE THAT SMART CHOICE!!!

Here we have a 72 sqm original 1.5 bedroom apartment. This flat is in good condition on the 3rd floor. With a large sitting room which has been partitioned, this is a bonus for extra rental income and has an enclosed balcony which is used as a half room. The main bedroom is very big and has built-in cupboards. The kitchen is neatly fitted.

This apartment block has a spacious reception at the entrance. The lifts are in working condition. Access into the block is controlled with the use of a tag.

The building is located on Schoeman Street, within walking distance of basic amenities such as KWIKSPAR Arcadia, Boston Colledge, BP Garage, Pretoria Technical High School, Mediclinic Mueland Hospital and with good access to transport.

Estimated Monthly Rental – R 6 000 – R 7 000 per month.

Estimated Monthly Levy – R 1...

Features

Interior

Bedrooms	1.5
Bathrooms	1
Recep. Rooms	1

Exterior

Carports / Parkings	1
Security	Yes
Pool	No

Sizes

Floor Size	72m ²
------------	------------------