

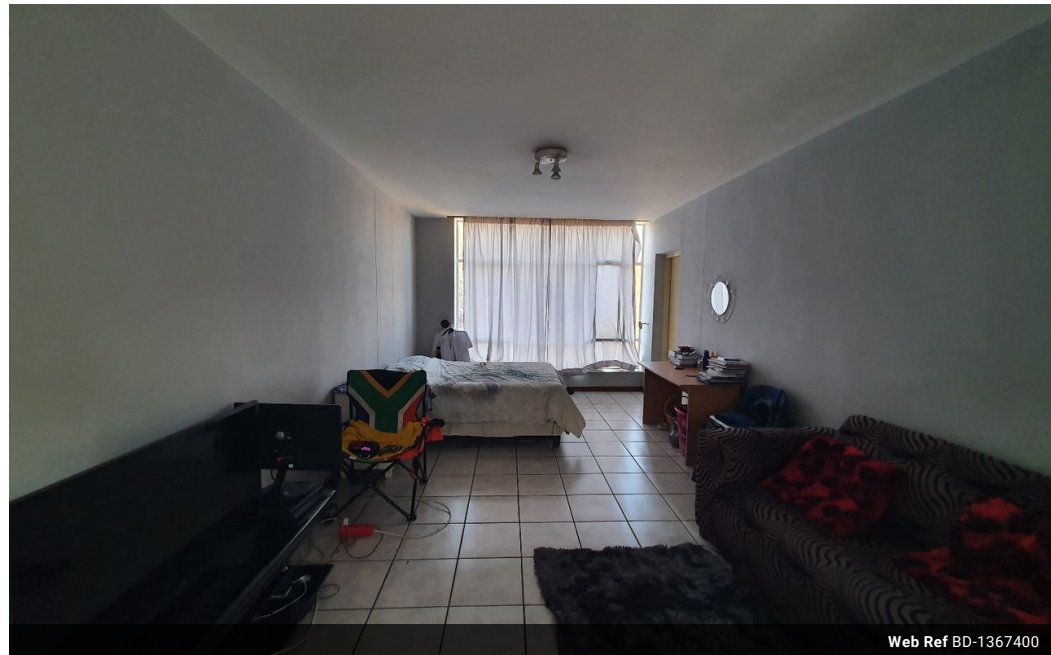


**Shewaan Abarder**  
 0760925545  
 imaginesales02@gmail.com

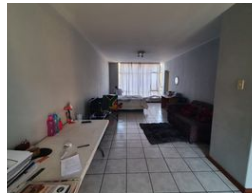
Contact Head Office (JHB,  
 Pretoria, Cape Town and Garden  
 Route)

**+27 712982714**

Unit 6 & 8 Rotherfield Trust  
 23 Rotherfield Road  
 Plumstead  
 7800



Web Ref BD-1367400



**R610,000**

 1.5  1

**Monthly Bond Repayment** R6,296.35

Calculated over 20 years at 11% with no deposit.

**Transfer Costs** R23,730.00 **Bond Costs** R17,680.00

These calculations are only a guide. Please ask your conveyancer for exact calculations.

**Monthly Levy** R1,519 **Monthly Rates** R238

**PROPER DESIGN!!! SMARTLY PRICED!!! READY FOR MOVE-IN!!!**

Here we have a spacious 73 sqm 1.5 bedroom apartment. This flat is in great condition on the 2nd floor. It is a large sitting that is perfect for entertaining. The enclosed balcony is used as a half room. The main bedroom is huge and has built-in cupboards. The kitchen is neatly fitted & the entire unit is tiled. This is the perfect home in a sort-after building. The exclusive-use garage is ideal for all your parking or storage needs.

This apartment block has a spacious reception at the entrance. The lifts are in working condition. The security guards are on-site 24hrs. Access into the block is controlled with the use of a tag.

The building is located on Beckett Street, within walking distance to basic amenities such as Woolworths Arcadia, Arcadia Primary School, Venning Park, Suncardia Shopping Centre, and East...

## Features

### Interior

Bedrooms	1.5
Bathrooms	1
Recep. Rooms	1

### Exterior

Carports / Parkings	1
Security	Yes
Pool	No

### Sizes

Floor Size	73m <sup>2</sup>
------------	------------------

