



Abubakr Achmat
0614557025
imaginesales01@gmail.com



Robin Lawrence
0814224787

imaginesales01@gmail.com

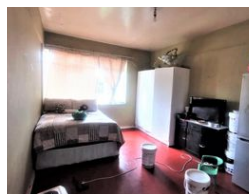
Contact Head Office (JHB,
Pretoria, Cape Town and Garden
Route)

+27 712982714

Unit 6 & 8 Rotherfield Trust
23 Rotherfield Road
Plumstead
7800



Web Ref BR-112272



R210,000

 1.5  1

Monthly Bond Repayment R2,167.60
Calculated over 20 years at 11% with no deposit.

Transfer Costs R13,821.00 **Bond Costs** R9,510.00
These calculations are only a guide. Please ask your conveyancer for exact calculations.

Monthly Levy R1,488

75SQM 1.5 BEDROOM UP FOR GRABS!!!

75sqm apartment that comes complete with a fitted kitchen, lounge, 1 large bedroom, with built in cupboards and a bathroom with bath and toilet. The unit also benefits from an enclosed balcony which is currently being utilized as an additional bedroom.

For an investor, this is an ideal opportunity as the space is quite large and could easily be utilized to partition an extra room or 2 and maximize on the rental yield.

The block is fairly well maintained and managed. It is situated at the corner of Harley Street and Fortesque Road, Yeoville. The location of the block also makes it extremely popular with tenants as it is within close proximity to all the major amenities and the main bus and taxi routes.

Estimated monthly levy: R1023

Potential rental income: R4600 - R5500

Features

Interior

Bedrooms	1.5
Bathrooms	1
Recep. Rooms	1

Exterior

Carports / Parkings	1
Security	Yes
Pool	No

Sizes

Floor Size	75m²
------------	------