



Robin Lawrence
0814224787
imaginesales01@gmail.com



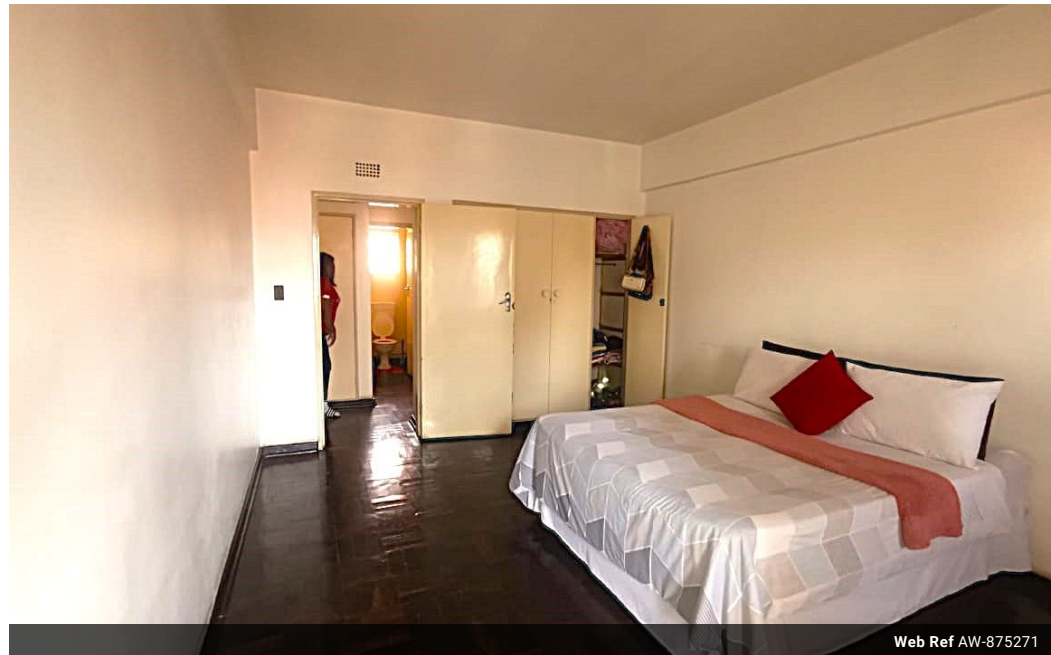
Abubakr Achmat
0614557025

imaginesales01@gmail.com

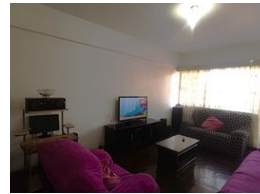
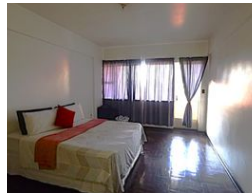
Contact Head Office (JHB,
Pretoria, Cape Town and Garden
Route)

+27 712982714

Unit 6 & 8 Rotherfield Trust
23 Rotherfield Road
Plumstead
7800



Web Ref AW-875271



R350,000



Monthly Bond Repayment R3,553.30

Calculated over 20 years at 10.75% with no deposit.

Transfer Costs R16,346.00 **Bond Costs** R11,560.00

These calculations are only a guide. Please ask your conveyancer for exact calculations.

Monthly Levy R1,983

SPACIOUS ONE BEDROOM FOR INVESTMENT NOW AVAILABLE IN YEOVILLE!!

This spacious 83 sqm consists of 1 bedroom with built in cupboards and a open balcony, dining area, open lounge, fitted kitchen, another open balcony, bathroom, separate toilet and comes with 2 parking bays

The block is very secure as it benefits from 24 hours security, security gate and fingerprint access system.

The block is very good with tenants as it is closely located to all amenities such as Engen filling station, Gautrain bus station, nelson Mandela Children's hospital, Police station, Bellevue Primary and High School, Faeriedale Shopping centre and University of Johannesburg.

Estimated Levy: R 1 983.00 per month.

Estimated Rental: R 4 200-R 5 200 per month.

Features

Interior

Bedrooms	1
Bathrooms	1
Recep. Rooms	1

Exterior

Carparks / Parkings	2
Security	Yes
Pool	No

Sizes

Floor Size	83m²
------------	------