



**Robin Lawrence**  
 0814224787  
 imaginesales01@gmail.com



**Abubakr Achmat**  
 0614557025

imaginesales01@gmail.com

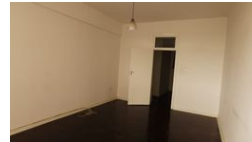
Contact Head Office (JHB,  
 Pretoria, Cape Town and Garden  
 Route)

**+27 712982714**

Unit 6 & 8 Rotherfield Trust  
 23 Rotherfield Road  
 Plumstead  
 7800



Web Ref BR-875017



**R305,000**

 1.5  1.5

**Monthly Bond Repayment** R3,096.45

Calculated over 20 years at 10.75% with no deposit.

**Transfer Costs** R16,346.00 **Bond Costs** R11,560.00

These calculations are only a guide. Please ask your conveyancer for exact calculations.

**Monthly Levy** R1,368

**LOVELY, WELL MAINTAINED AND RENOVATED 1.5 BEDROOM UNIT OFF LOUIS BOTHA AVE!!!**

Here we have an extremely spacious 83sqm apartment that comes complete with a fully fitted kitchen, dining area, lockable large living room, 1 spacious bedroom, with built-in cupboards, bathroom with bath and separate toilet, and an enclosed balcony.

The building is very well managed and maintained by Compeg - Landsec Managing Agents. It is situated on the corner of Cavendish Road and Louis Botha Avenue. The building is also very popular with tenants as it's locations is very close to all the major amenities and the main bus and taxi routes are literally at your doorstep.

Levy: R 1 367.75  
 CSOS Levy: R15.27  
 Reserve Fund Levy: R167.96  
 Security: R383.98  
 Sewer: R196.66

Potential rental income: R 5 000 - R 6 000

## Features

### Interior

Bedrooms	1.5
Bathrooms	1.5
Recep. Rooms	1

### Exterior

Carports / Parkings	1
Security	Yes
Pool	No

### Sizes

Floor Size	83m²
------------	------