



Abubakr Achmat
0614557025
imaginesales01@gmail.com



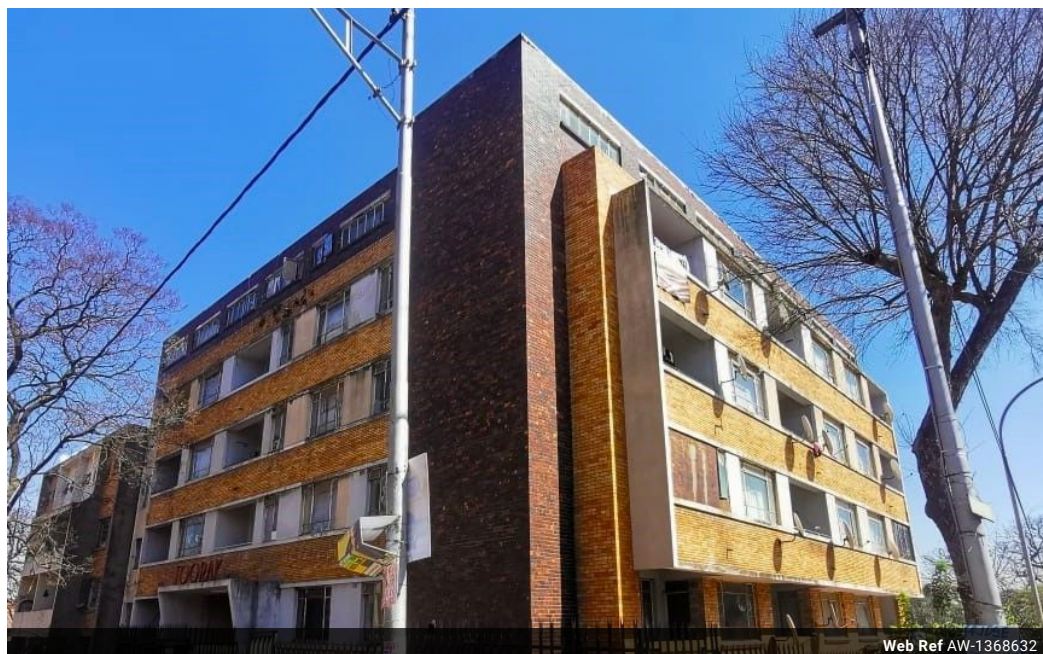
Robin Lawrence
0814224787

imaginesales01@gmail.com

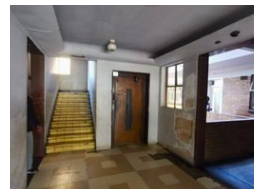
Contact Head Office (JHB,
Pretoria, Cape Town and Garden
Route)

+27 712982714

Unit 6 & 8 Rotherfield Trust
23 Rotherfield Road
Plumstead
7800



Web Ref AW-1368632



R180,000

 0.5  1

Monthly Bond Repayment R1,827.41

Calculated over 20 years at 10.75% with no deposit.

Transfer Costs R12,067.00

Bond Costs R8,485.00

These calculations are only a guide. Please ask your conveyancer for exact calculations.

Monthly Levy R751

BACHELOR UNIT NOW AVAILABLE IN POPULAR BLOCK!!

This 40 sqm bachelor unit consists of built in cupboards, a kitchen, bathroom with toilet and open balcony. The apartment is situated on the 1st floor, lifts are not in working order but this is being looked into.

Very neat looking complex which has been well maintained by the blocks managing agent, to date. The building is a prime example, resembling the revival of the Inner City and we believe it offers great capital growth prospects.

The location of block is extremely popular with tenants due to its location, being within close proximity to local amenities such as the local Shoprite, Yeoville Police station, Main bus and taxi routes. There is 24 hour security and underground parking.

Estimated Levy: R 751.00 per month.

Estimated Rent: R 2 500.00 - R 2 800.00 per month.

Features

Interior

Bedrooms	0.5
Bathrooms	1
Recep. Rooms	0.5

Exterior

Carparks / Parkings	1
Security	Yes
Pool	No

Sizes

Floor Size	40m²
------------	------