



Abubakr Achmat
0614557025
imaginesales01@gmail.com



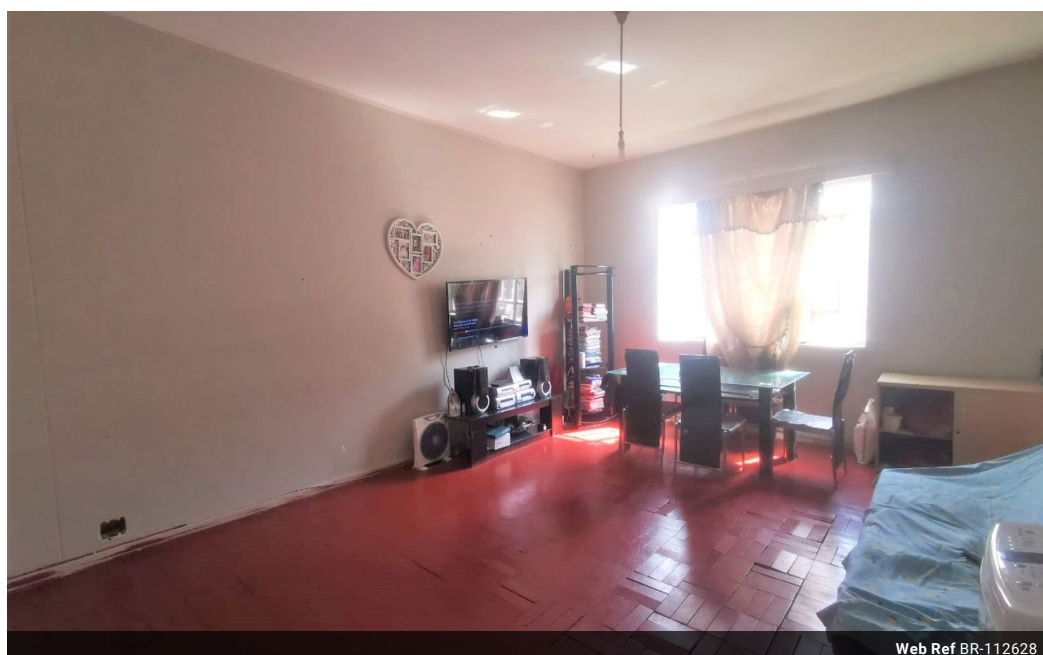
Robin Lawrence
0814224787

imaginesales01@gmail.com

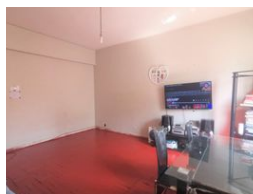
Contact Head Office (JHB,
Pretoria, Cape Town and Garden
Route)

+27 712982714

Unit 6 & 8 Rotherfield Trust
23 Rotherfield Road
Plumstead
7800



Web Ref BR-112628



R355,000

2 1.5

Monthly Bond Repayment R3,664.27

Calculated over 20 years at 11% with no deposit.

Transfer Costs R16,806.00 **Bond Costs** R11,960.00

These calculations are only a guide. Please ask your conveyancer for exact calculations.

Monthly Levy R1,200

2 BEDROOM UNIT UP FOR GRABS IN VERY SOUGHT AFTER BLOCK!!!

Here we have a 99 sqm 2 bedroom flat, which comes with a lockable lounge that can be used as an additional bedroom, an entrance hall, kitchen, bathroom with separate toilet and an open balcony. The apartment is on the 1st floor of the building making it easily accessible.

This block is in a great location and is extremely popular with tenants due to its central location being close to all the major amenities as well as the main taxi and bus routes. The block benefits from a secure access gate and secure parking.

Estimated monthly Levy: R 1 200

Potential Rental income: R 5 300 – R 5 900

Features

Interior

Bedrooms	2
Bathrooms	1.5
Recep. Rooms	1

Exterior

Carports / Parkings	1
Security	Yes
Pool	No

Sizes

Floor Size	99m²
------------	------