



**Robin Lawrence**  
0814224787  
imaginesales01@gmail.com



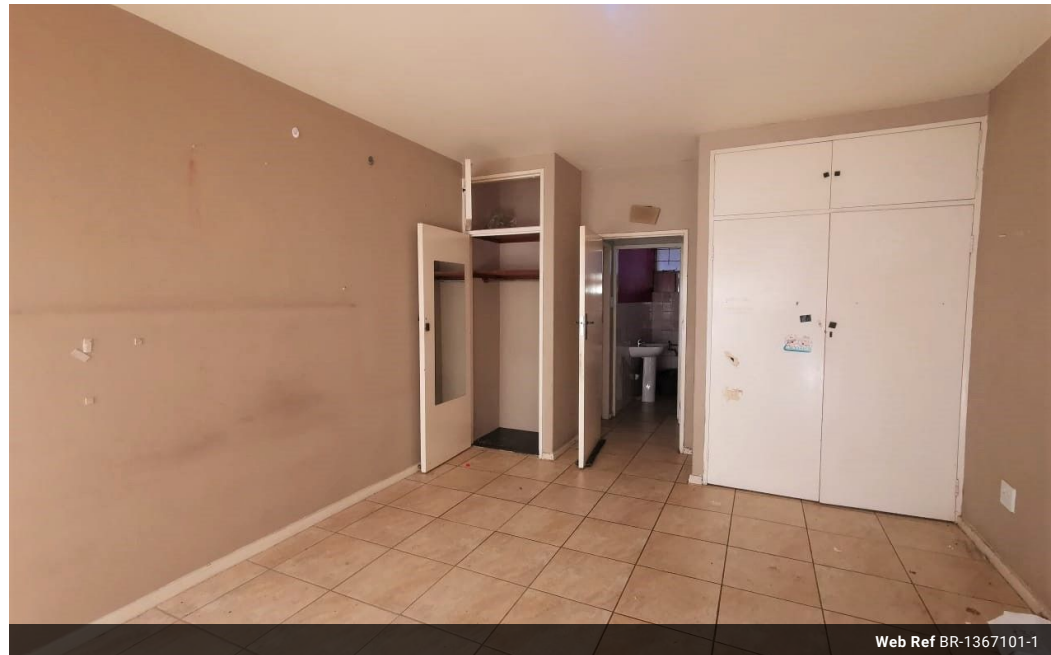
**Abubakr Achmat**  
0614557025

imaginesales01@gmail.com

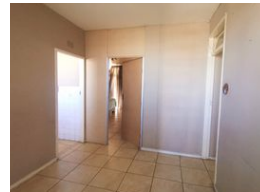
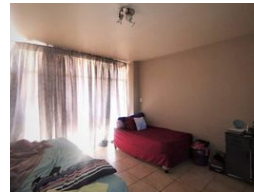
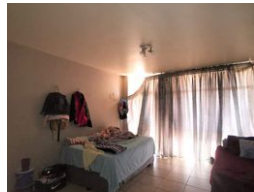
Contact Head Office (JHB,  
Pretoria, Cape Town and Garden  
Route)

+27 712982714

Unit 6 & 8 Rotherfield Trust  
23 Rotherfield Road  
Plumstead  
7800



Web Ref BR-1367101-1



**R240,000**



**Monthly Bond Repayment** R2,436.55

Calculated over 20 years at 10.75% with no deposit.

**Transfer Costs** R13,821.00    **Bond Costs** R9,510.00

These calculations are only a guide. Please ask your conveyancer for exact calculations.

**Monthly Levy** R1,321

### PERFECT INVESMENT AT A GREAT PRICE!!!

Lovely, spacious 76 sqm unit consists of 2 bedrooms, small lounge, bathroom, and separate toilet with a large open balcony which can be accessed from both bedrooms, perfect for those sunny summer days.

The block is well managed and maintained by compeg managing agents and benefits from 24hr security and an access controlled entrance gate.

The block is very popular with tenants due to it being centrally located and within walking distance of all major amenities including St Endas Secondary School, clinics, shopping centres etc..

Levy - R1003.00  
Sewerage - R308.00  
CSOS Levy - R10.06

Water & electricity are metered so it depends on usage.

Current Rent: R 5 500 per month

### Features

#### Interior

Bedrooms	1
Bathrooms	1
Recep. Rooms	1

#### Exterior

Carports / Parkings	1
Security	Yes
Pool	No

#### Sizes

Floor Size	76m²
------------	------