



**Abubakr Achmat**  
0614557025  
imaginesales01@gmail.com



**Robin Lawrence**  
0814224787

imaginesales01@gmail.com

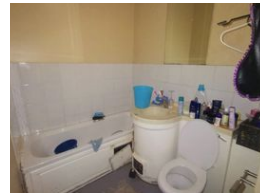
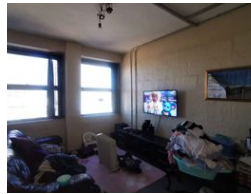
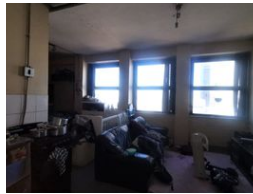
Contact Head Office (JHB,  
Pretoria, Cape Town and Garden  
Route)

+27 712982714

Unit 6 & 8 Rotherfield Trust  
23 Rotherfield Road  
Plumstead  
7800



Web Ref AW-1365424



**R170,000**

0.5 1

**Monthly Bond Repayment** R1,725.89

Calculated over 20 years at 10.75% with no deposit.

**Transfer Costs** R12,067.00

**Bond Costs** R8,485.00

These calculations are only a guide. Please ask your conveyancer for exact calculations.

**Monthly Levy** R1,100

### INNER CITY LOCK-UP & GO UNIT NOW AVAILABLE!!

This 37 sqm bachelor unit consists of a neatly fitted kitchen, bathroom and toilet. The unit is in good condition and is a great investment as this would work perfectly for the young professional or student in area who wants to enjoy living close to all amenities. Basement parking is available to rent from the body corporate.

The block is very well managed and popular with tenants due to its location being close to all amenities. It is located close to main bus and taxi routes, and very close to Carlton Centre. The complex is well secured with 24 hour security and card access gate.

If this isn't enough, the block has bonus offerings such as laundry facilities, biometric access control and 24hr security.

Estimated Levy: R1 100.00 per month.

Estimated Rental: R 2 500.00 – R3 200.00 per month

### Features

#### Interior

Bedrooms	0.5
Bathrooms	1
Recep. Rooms	1

#### Exterior

Carparks / Parkings	1
Security	Yes
Pool	No

#### Sizes

Floor Size	37m²
------------	------