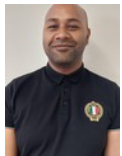




Robin Lawrence
0814224787
imaginesales01@gmail.com



Abubakr Achmat
0614557025

imaginesales01@gmail.com

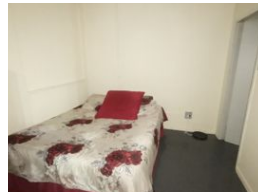
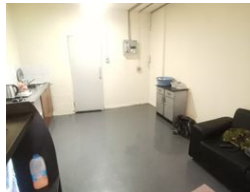
Contact Head Office (JHB,
Pretoria, Cape Town and Garden
Route)

+27 712982714

Unit 6 & 8 Rotherfield Trust
23 Rotherfield Road
Plumstead
7800



Web Ref BR-1354346-2



R210,000

0.5 1

Monthly Bond Repayment R2,167.60

Calculated over 20 years at 11% with no deposit.

Transfer Costs R13,821.00 **Bond Costs** R9,510.00

These calculations are only a guide. Please ask your conveyancer for exact calculations.

Monthly Levy R748 **Monthly Rates** R407

34SQM UNIT PRICED TO GO!!!

Here we have a 34 sqm bachelor apartment with built-in cupboards, fitted kitchen, bathroom. This building is situated in Smal Street corner of Pritchard Street in Johannesburg CBD.

The unit is in a good condition and is a great investment as this would work perfectly for the young professional ready to start or student in the area who wants to enjoy the inner city living experience. Basement parking is available to rent from the body corporate.

The block is very well managed by Trafalgar managing agency and popular with tenants due to its location being close to all amenities. It is well situated close to the main bus and taxi routes, and very close to Carlton Centre. As if this isn't enough, the block has bonus offerings such as laundry facilities, biometric access control, and 24hr security.

Levy: R 748.00 per...

Features

Interior

Bedrooms	0.5
Bathrooms	1
Recep. Rooms	0.5

Exterior

Security	Yes
Pool	No

Sizes

Floor Size	34m²
------------	------