



**Abubakr Achmat**  
0614557025  
imaginesales01@gmail.com



**Robin Lawrence**  
0814224787

imaginesales01@gmail.com

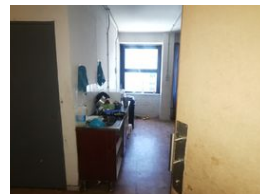
Contact Head Office (JHB,  
Pretoria, Cape Town and Garden  
Route)

+27 712982714

Unit 6 & 8 Rotherfield Trust  
23 Rotherfield Road  
Plumstead  
7800



Web Ref AW-113702-2



**R200,000**



**Monthly Bond Repayment** R2,064.38  
Calculated over 20 years at 11% with no deposit.

**Transfer Costs** R12,067.00    **Bond Costs** R8,485.00  
These calculations are only a guide. Please ask your conveyancer for exact calculations.

**Monthly Levy** R1,195    **Monthly Rates** R559

### BE ONE WITH THE CITY!!!

Here we have a 57 sqm one bedroom with a fitted kitchen, bathroom and toilet.

The flat is in good condition and is a great investment as this would work perfectly for the young professional or student in area who wants to enjoy living close to all amenities. Basement parking is available to rent from the body corporate.

The block is very well managed and popular with tenants due to its location being close to all amenities. It is situated close to main bus and taxi routes, and very close to Carlton Centre. The block is well secured with 24-hour security, security gate and card access system.

Estimated Levy: R 1194.90 per month.

Estimated Rental: R 3 500 – R 4 200 per month.

### Features

Interior		Exterior		Sizes	
Bedrooms	1	Security	Yes	Floor Size	57m <sup>2</sup>
Bathrooms	1	Pool	No		
Recep. Rooms	1				