



Abubakr Achmat
0614557025
imaginesales01@gmail.com



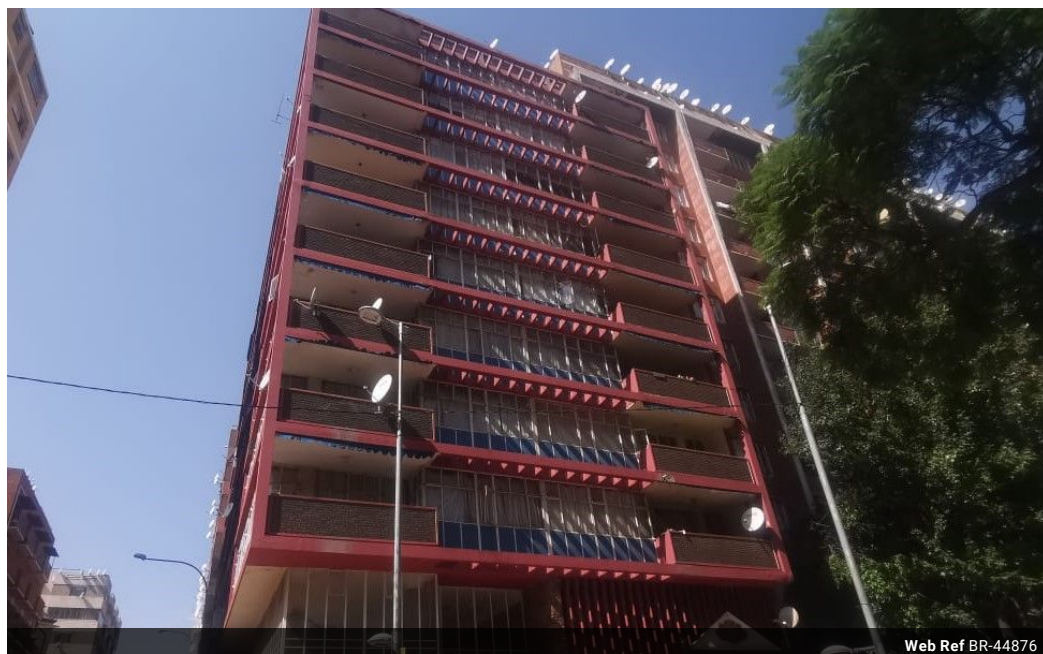
Robin Lawrence
0814224787

imaginesales01@gmail.com

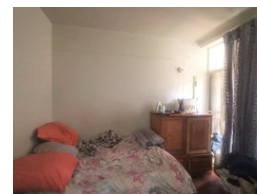
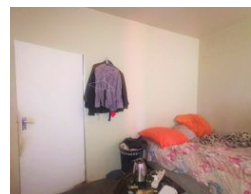
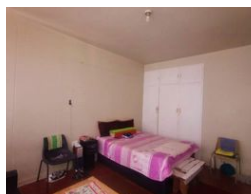
Contact Head Office (JHB,
Pretoria, Cape Town and Garden
Route)

+27 712982714

Unit 6 & 8 Rotherfield Trust
23 Rotherfield Road
Plumstead
7800



Web Ref BR-44876



R235,000

1 1

Monthly Bond Repayment R2,425.64
Calculated over 20 years at 11% with no deposit.

Transfer Costs R13,821.00 **Bond Costs** R9,510.00
These calculations are only a guide. Please ask your conveyancer for exact calculations.

Monthly Levy R982

71SQM 1 BEDROOM UNIT WITH EXTRA PARTITIONED BEDROOM TO MAXIMIZE ON RENTAL!!!

Large 71 sqm 1 bedroom flat with built in cupboards, open lounge, kitchen, bathroom and toilet, and sunny open balcony. The unit also consists of a partitioned bedroom to maximize on rental making it ideal for investors. Another benefit for investors is that the unit has prepaid water and electricity meters installed lessening expenses. This flat is on the 3rd floor of the building with elevators in good working order. Parking bays can be rented directly from the body corporate.

Roseacres is one of the nicest looking blocks in Hillbrow and is extremely popular with tenants. The block is at corner of Goldreich and Banket Street, Hillbrow and situated close to all amenities such as Johannesburg Girls Preparatory School, Barnato Park High School, Rand Clinic and Spar. The building benefits from secure parking and access security...

Features

| Interior | | Exterior | | Sizes | |
|--------------|---|----------|-----|------------|------|
| Bedrooms | 1 | Security | Yes | Floor Size | 71m² |
| Bathrooms | 1 | Pool | No | | |
| Recep. Rooms | 1 | | | | |