



**Abubakr Achmat**  
0614557025  
imaginesales01@gmail.com



**Robin Lawrence**  
0814224787

imaginesales01@gmail.com

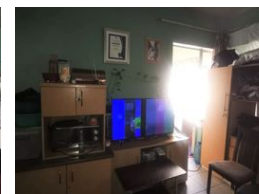
Contact Head Office (JHB,  
Pretoria, Cape Town and Garden  
Route)

+27 712982714

Unit 6 & 8 Rotherfield Trust  
23 Rotherfield Road  
Plumstead  
7800



Web Ref AB-112302



**R250,000**

2 1

**Monthly Bond Repayment** R2,538.07

Calculated over 20 years at 10.75% with no deposit.

**Transfer Costs** R13,821.00 **Bond Costs** R9,510.00

These calculations are only a guide. Please ask your conveyancer for exact calculations.

**Monthly Levy** R656

### NEAT 2 BEDROOM UNIT WITH ADDITIONAL PARTITIONED BEDROOM PRICED TO GO!!!

This 89 sqm unit consists of two bedrooms with built in cupboards, small lounge area which has been partitioned to add another bedroom, kitchen, open balcony and bathroom with a separate toilet.

The building is one of the nicest looking blocks in Hillbrow and is extremely popular with tenants. The block is situated close to all amenities such as Johannesburg Girls Preparatory School, Barnato Park High School, Rand Clinic and Spar. The building benefits from secure parking which can be rented from the body corporate and access security gate and 24hr security.

Estimated Levy: R 656.43 per month.

Estimated Rental: R 4 800.00 – R 5 800.00 per month.

### Features

#### Interior

Bedrooms	2
Bathrooms	1
Recep. Rooms	0.5

#### Exterior

Security	Yes
Pool	No

#### Sizes

Floor Size	89m²
------------	------