



Robin Lawrence
0814224787
imaginesales01@gmail.com



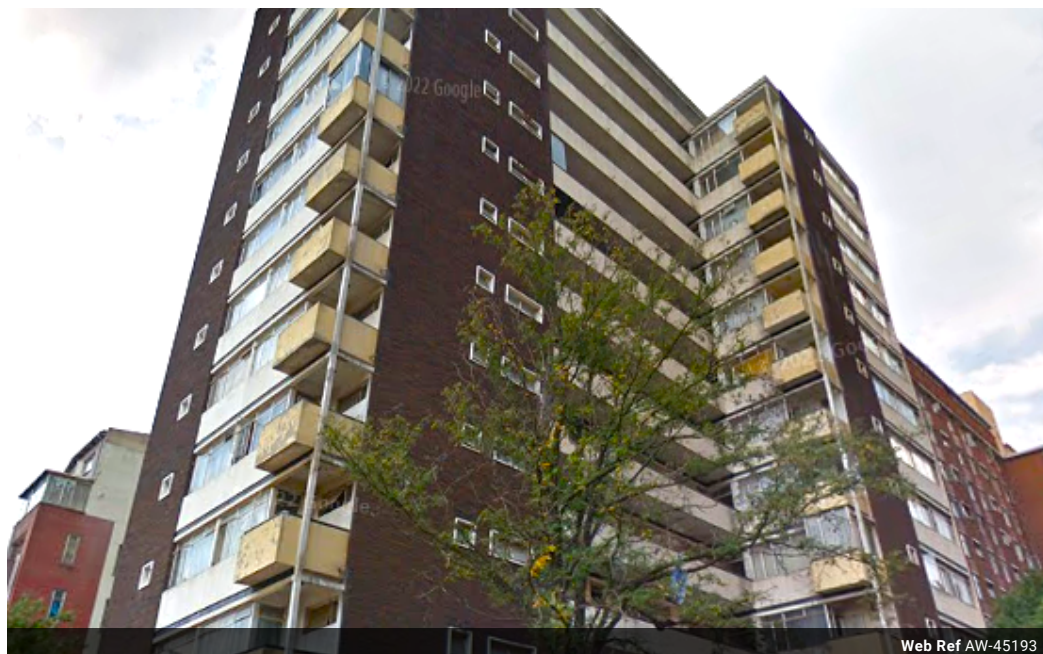
Abubakr Achmat
0614557025

imaginesales01@gmail.com

Contact Head Office (JHB,
Pretoria, Cape Town and Garden
Route)

+27 712982714

Unit 6 & 8 Rotherfield Trust
23 Rotherfield Road
Plumstead
7800



Web Ref AW-45193



R300,000

3 2

Monthly Bond Repayment R3,045.69

Calculated over 20 years at 10.75% with no deposit.

Transfer Costs R15,517.00 **Bond Costs** R10,985.00

These calculations are only a guide. Please ask your conveyancer for exact calculations.

Monthly Levy R1,600

THREE BEDROOM IN HILLBROW NOW AVAILABLE!!

This 125 sqm unit consists of 3 bedrooms with built-in cupboards, open lounge, kitchen, bathroom, separate toilet and a shower. As an added benefit it also has an 2 enclosed balcony which could easily be used as an additional bedroom to maximize on rental.

This block benefits from CCTV cameras and tenants use a security card for gate access.

The unit has huge potential for the avid investor as it benefits tenants being centrally located close to all amenities as well as the Fire Station, major bus and taxi routes and Brenthurst Private Clinic.

Estimated Levy: R1 617.19 per month

Potential Rental: R6 300.00-R7 500.00 per month

Features

Interior		Exterior		Sizes	
Bedrooms	3	Carports / Parkings	1	Floor Size	125m²
Bathrooms	2	Security	Yes		
		Pool	No		

