



**Robin Lawrence**  
0814224787  
imaginesales01@gmail.com



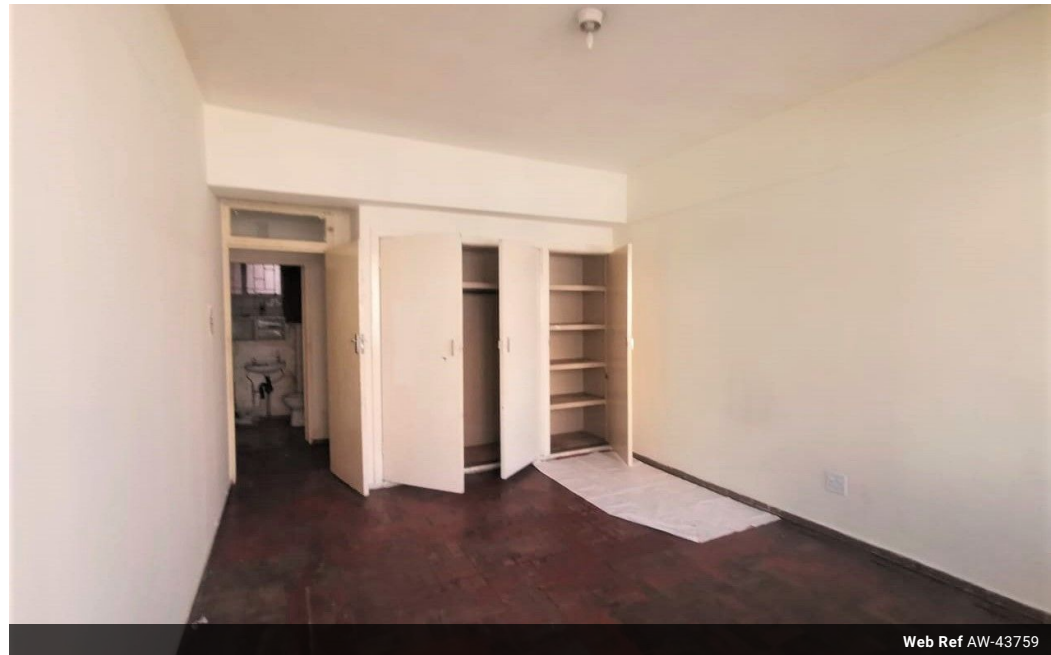
**Abubakr Achmat**  
0614557025

imaginesales01@gmail.com

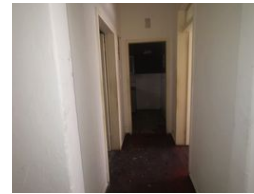
Contact Head Office (JHB,  
Pretoria, Cape Town and Garden  
Route)

+27 712982714

Unit 6 & 8 Rotherfield Trust  
23 Rotherfield Road  
Plumstead  
7800



Web Ref AW-43759



**R190,000**



**Monthly Bond Repayment** R1,928.94

Calculated over 20 years at 10.75% with no deposit.

**Transfer Costs** R12,067.00 **Bond Costs** R8,485.00

These calculations are only a guide. Please ask your conveyancer for exact calculations.

**Monthly Levy** R898

### PERFECT INVESTMENT OPPORTUNITY, LARGE 1.5 BED UP FOR GRABS!!!

A large spacious 75 sqm, 1.5 bedroom apartment, which includes spacious en-suite bedroom with built-in cupboards, kitchen, large lounge area and enclosed balcony which can easily be used to maximize rental.

The building benefits from 24hr security and a security gate and is managed by an internal body corporate and benefits from low levies. The block is situated on the ever famous Van De Merwe Street, making it very popular with tenants as it is closely situated within the hustle and bustle of the CBD as well as main bus and taxi routes.

Estimated monthly levy: R 898.06

Estimated monthly rental income: R 3 000 - R 4 000

### Features

#### Interior

Bedrooms	1
Bathrooms	1
Recep. Rooms	1

#### Exterior

Carports / Parkings	1
Security	Yes
Pool	No

#### Sizes

Floor Size	75m²
------------	------