



**Abubakr Achmat**  
0614557025  
imaginesales01@gmail.com



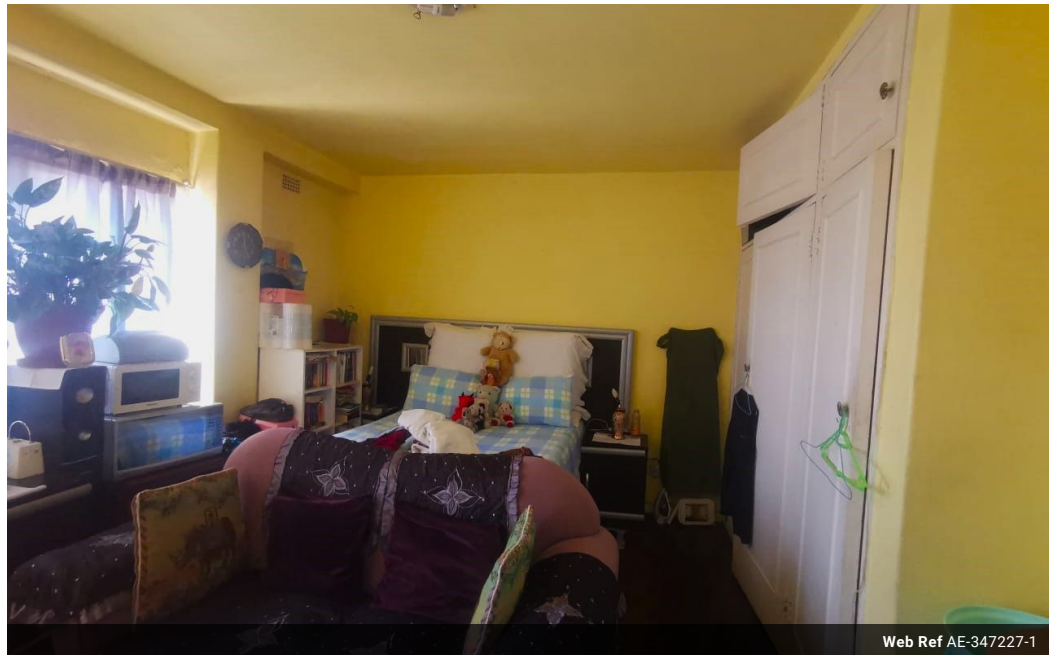
**Robin Lawrence**  
0814224787

imaginesales01@gmail.com

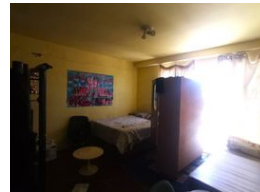
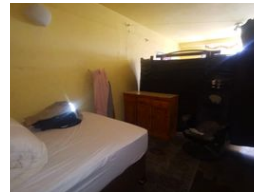
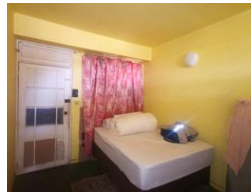
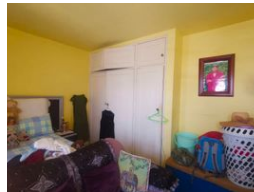
Contact Head Office (JHB,  
Pretoria, Cape Town and Garden  
Route)

**+27 712982714**

Unit 6 & 8 Rotherfield Trust  
23 Rotherfield Road  
Plumstead  
7800



Web Ref AE-347227-1



**R230,000**

1 1

**Monthly Bond Repayment** R2,335.03

Calculated over 20 years at 10.75% with no deposit.

**Transfer Costs** R13,821.00 **Bond Costs** R9,510.00

These calculations are only a guide. Please ask your conveyancer for exact calculations.

**Monthly Levy** R1,244

### PERFECT FOR THE INVESTOR BUYER!!

This spacious 95 sqm unit consists of a one bedroom flat with built in cupboards, large open lounge, kitchen, bathroom with toilet and extremely large open balcony giving you views from the top floor.

This unit is on the 12th floor of the building. One added bonus is that this unit does come with a parking bay.

The building is located in the better part of Hillbrow. The block is well positioned close to all amenities including Rand Clinic, Brendhurst Clinic, Hillbrow Police Station, Spar etc. The block is very popular with tenants due to its convenient location and easy access to transport. The block is well secured with 24 hr security.

Estimated Levy: R 1 244.00 per month.

Estimated Rental: R 6 500.00 – R 7 200 .00per month.

### Features

#### Interior

Bedrooms	1
Bathrooms	1
Recep. Rooms	1

#### Exterior

Carparks / Parkings	1
Security	Yes
Pool	No

#### Sizes

Floor Size	95m²
------------	------