



**Abubakr Achmat**  
0614557025  
imaginesales01@gmail.com



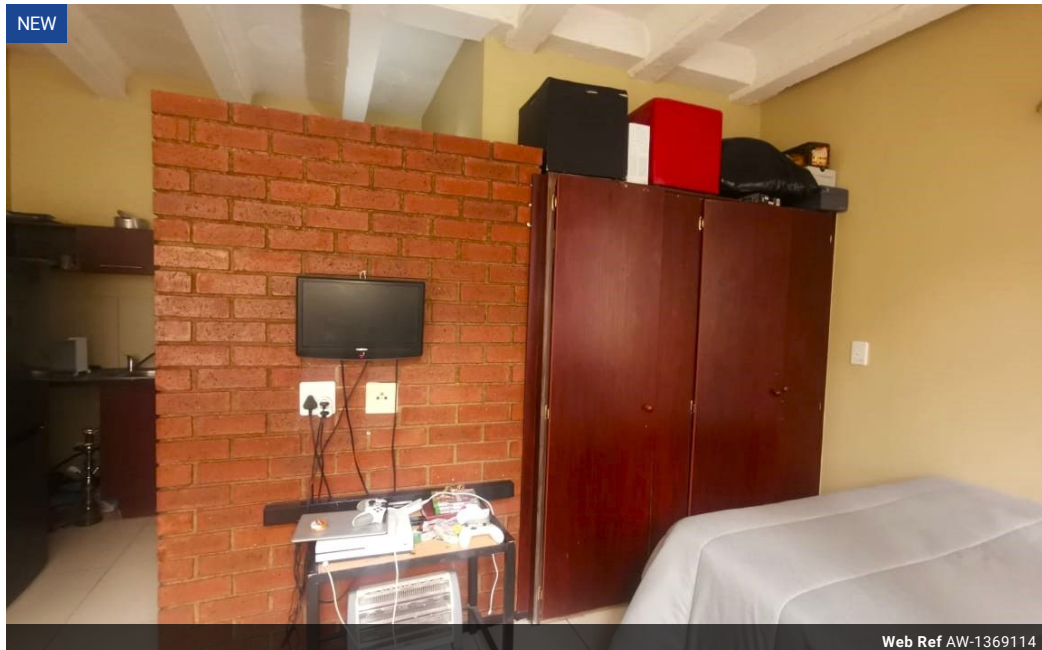
**Robin Lawrence**  
0814224787

imaginesales01@gmail.com

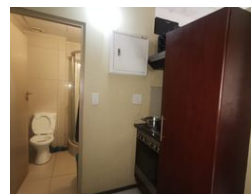
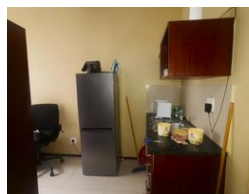
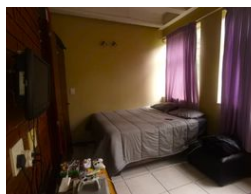
Contact Head Office (JHB,  
Pretoria, Cape Town and Garden  
Route)

+27 712982714

Unit 6 & 8 Rotherfield Trust  
23 Rotherfield Road  
Plumstead  
7800



Web Ref AW-1369114



**R335,000**

 0.5  1

**Monthly Bond Repayment** R3,401.02

Calculated over 20 years at 10.75% with no deposit.

**Transfer Costs** R16,346.00 **Bond Costs** R11,560.00

These calculations are only a guide. Please ask your conveyancer for exact calculations.

**Monthly Levy** R1,575

### PERFECT INVESTORS UNIT AVAILABLE IN BRAAMFONTEIN!!

This 30 sqm unit consist of a 1 bedroom flat with built in cupboards, a fitted kitchen space, shower and toilet. The apartment is on the 6th floor of the building with lifts in excellent working condition. Parking bays can be arranged and rented from the Body Corporate, if available.

The building is located next to the Johannesburg Theatre, JD Group, Sappi and Liberty. It is a stone throw away from the Gautrain and the Rea Vaya Station, making it a very convenient location for students or young professionals.

This unit is the perfect buy for those that want to experience modern city-living without having to worry about costly renovations or the security risks usually associated with the Johannesburg CBD. There is a high rental demand because of the location, being close to Wits University and the University of...

### Features

Interior		Exterior		Sizes	
Bedrooms	0.5	Security	Yes	Floor Size	30m²
Bathrooms	1	Pool	No		
Recep. Rooms	0.5				