



Abubakr Achmat
0614557025
imaginesales01@gmail.com



Robin Lawrence
0814224787

imaginesales01@gmail.com

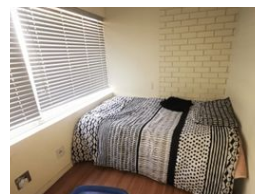
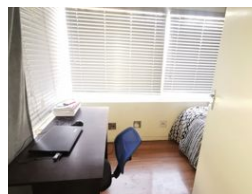
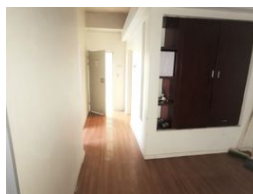
Contact Head Office (JHB,
Pretoria, Cape Town and Garden
Route)

+27 712982714

Unit 6 & 8 Rotherfield Trust
23 Rotherfield Road
Plumstead
7800



Web Ref BR-1357843-1



R585,000

2 1

Monthly Bond Repayment R6,038.30

Calculated over 20 years at 11% with no deposit.

Transfer Costs R21,217.00 **Bond Costs** R15,795.00

These calculations are only a guide. Please ask your conveyancer for exact calculations.

Monthly Levy R1,600

2 BEDROOM UNIT IN STUDENT HUB OF JHB!!!

Lovely modernized 2 bedroom 52 sqm flat consisting of built-in cupboards, a neat kitchen with granite tops, modern-day bathroom and toilet facilities. The unit is situated on the 8th floor with elevators in perfect working condition making it conveniently accessible.

The building is popular with tenants (students) due to its central location the unit is close to all amenities including The University of Johannesburg, Wits University, Gautrain Station and benefits from a card access gate, 24 hours security, and basement parking.

Levy: R 1 600 per month.

Current Rental: R 7000

Features

Interior

Bedrooms	2
Bathrooms	1
Recep. Rooms	0.5

Exterior

Security	No
Pool	No

Sizes

Floor Size	52m²
------------	------