



**Robin Lawrence**  
0814224787  
imaginesales01@gmail.com



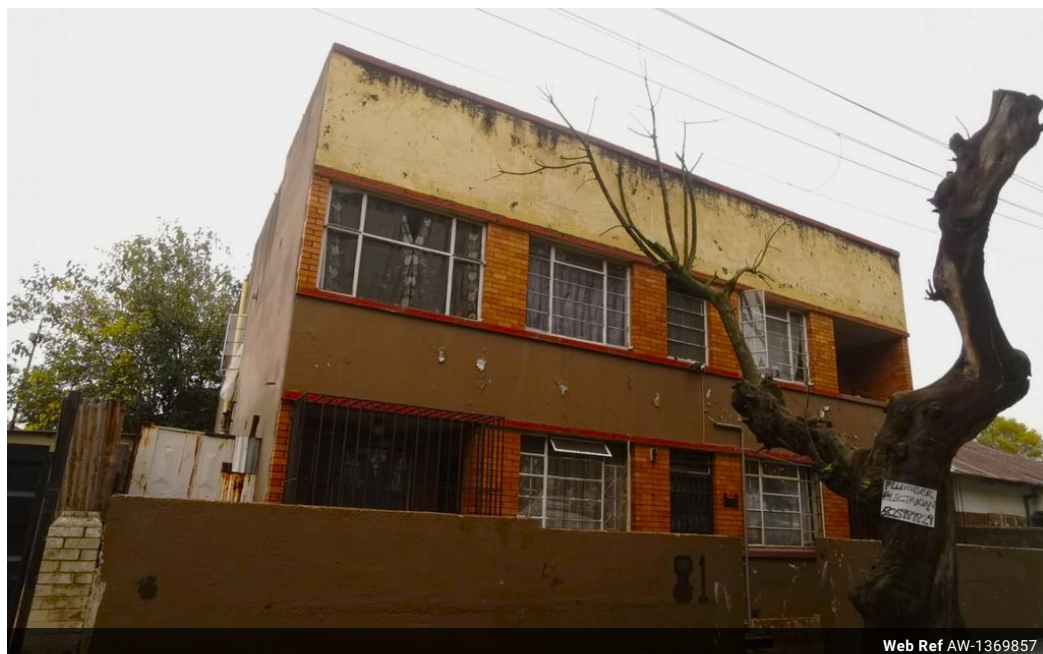
**Abubakr Achmat**  
0614557025

imaginesales01@gmail.com

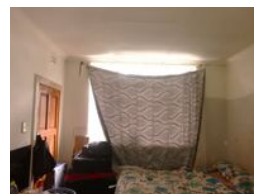
Contact Head Office (JHB,  
Pretoria, Cape Town and Garden  
Route)

+27 712982714

Unit 6 & 8 Rotherfield Trust  
23 Rotherfield Road  
Plumstead  
7800



Web Ref AW-1369857



**R500,000**

8 4

**Monthly Bond Repayment** R4,991.90

Calculated over 20 years at 10.5% with no deposit.

**Transfer Costs** R19,105.00 **Bond Costs** R13,910.00

These calculations are only a guide. Please ask your conveyancer for exact calculations.

### BUILDING NOW AVAILABLE!!!

This block of flats size of 248qm comes with 4 two bedroom with lounge, kitchen, closed balcony and bathroom.

The property is situated in Denver.

This property is GREAT for investment and sits on a potential income of R22 000 per month

This building is close to all amenities creating high tenant demand. It is in close to Schools, service stations, supermarkets and places of prayer.

This block is GREAT for investment purposes with a very positive cash flow.

Estimated potential rental: R 11 000.00- R 20 000.00 per month

### Features

Interior		Exterior		Sizes	
Bedrooms	8	Security	No	Floor Size	248m <sup>2</sup>
Bathrooms	4	Pool	No	Land Size	248m <sup>2</sup>