



**Abubakr Achmat**  
0614557025  
imaginesales01@gmail.com



**Robin Lawrence**  
0814224787

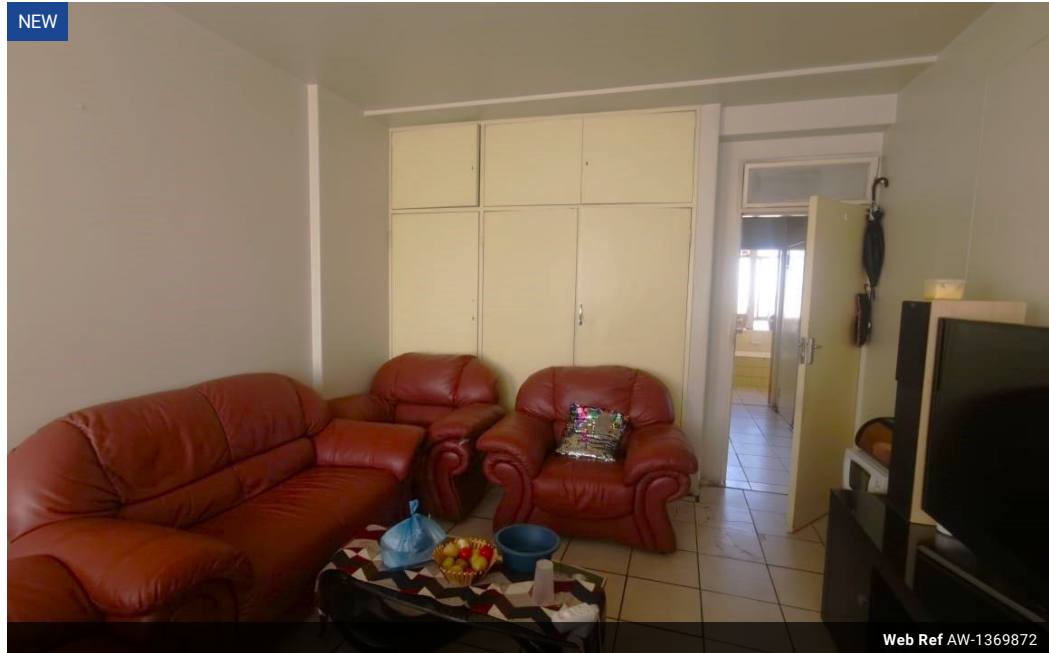
imaginesales01@gmail.com

Contact Head Office (JHB,  
Pretoria, Cape Town and Garden  
Route)

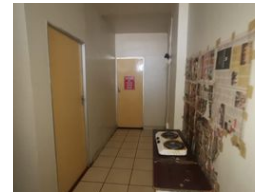
+27 712982714

Unit 6 & 8 Rotherfield Trust  
23 Rotherfield Road  
Plumstead  
7800

NEW



Web Ref AW-1369872



**R3,000,000**

19 13

**Monthly Bond Repayment** R30,456.87

Calculated over 20 years at 10.75% with no deposit.

**Transfer Costs** R160,211.00 **Bond Costs** R42,185.00

These calculations are only a guide. Please ask your conveyancer for exact calculations.

**Monthly Levy** R2,208

**BULK SALE OF 9 UNITS GREAT FOR INVESTMENT NOW AVAILABLE IN BEREA!!**

This bulk deal consists of the below units:

Two 74 sqm units which consists of a 1 bedroom, lounge and bathroom.

Potential rental: R 4 200.00 - R 5 000.00 per month

Estimated Levy : R1961.85 per month

One 99 sqm unit which consists of 1 bedroom, lounge, closed balcony and bathroom.

Potential rental : R 4 800.00 - R 5 500.00 per month

Estimated Levy : R 2208.93 per month

Three 108 sqm units which consists of 2 bedrooms, lounge and bathroom.

Potential rental : R 5 800.00 - R 7 000.00 per month

Estimated Levy : R 2376.65 per month

One 127 sqm unit which consists of 3 bedrooms, lounge and 2 bathrooms.

Potential rental : R 5 000.00 - R 8 500.00 per month

Estimated levy : R 2731.46 per month

## Features

### Interior

Bedrooms 19  
Bathrooms 13

### Exterior

Security Yes  
Pool No

### Sizes

Floor Size 99m<sup>2</sup>