



**Robin Lawrence**  
0814224787  
imaginesales01@gmail.com



**Abubakr Achmat**  
0614557025

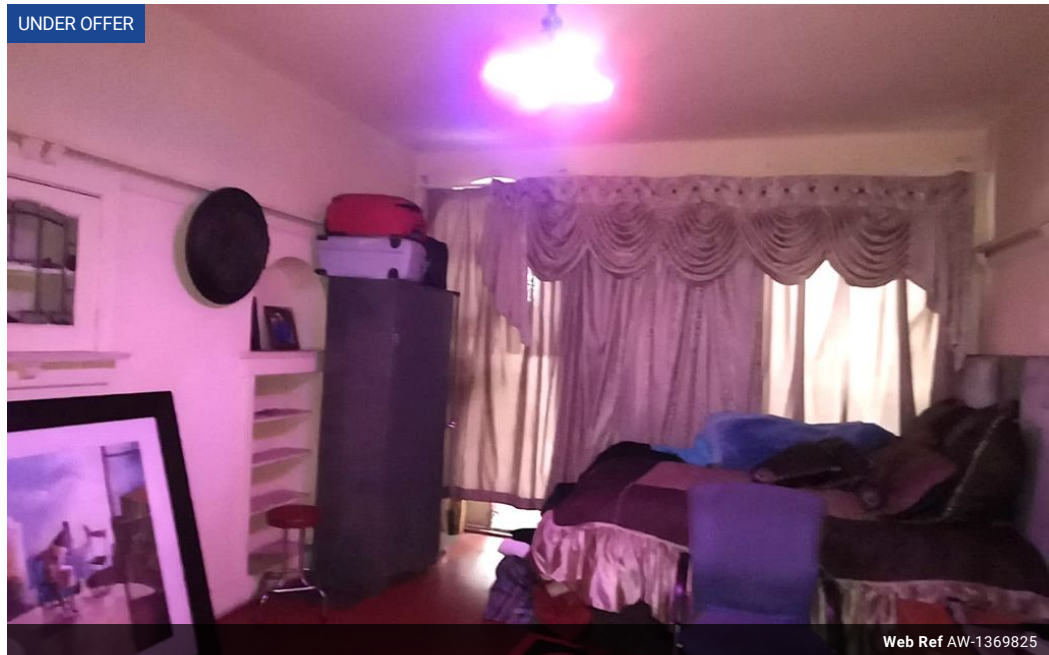
imaginesales01@gmail.com

Contact Head Office (JHB,  
Pretoria, Cape Town and Garden  
Route)

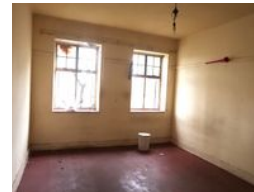
+27 712982714

Unit 6 & 8 Rotherfield Trust  
23 Rotherfield Road  
Plumstead  
7800

UNDER OFFER



Web Ref AW-1369825



**R165,000**



**Monthly Bond Repayment** R1,675.13

Calculated over 20 years at 10.75% with no deposit.

**Transfer Costs** R12,067.00

**Bond Costs** R8,485.00

These calculations are only a guide. Please ask your conveyancer for exact calculations.

**Monthly Levy** R1,370

### HUGE ONE BEDROOM PERFECT FOR INVESTMENT!!

This large 76 sqm consists of a one bedroom apartment with built in cupboards, lockable lounge converted into a bedroom, kitchen, bathroom with toilet and open balcony. The unit could use a lick of paint and TLC. The flat is situated on the third floor making it easily accessible.

This building is located on Prospect Road corner of Catherine Street. The block is managed by Angor and popular with tenants due to its central location and close proximity to all amenities such as the University of Johannesburg and Ellis Park stadium. The building benefits from 24 hour security and security gate.

Estimated Levy: R 1 370.00 per month.

Estimated Rental: R 4 400.00 – R 5 800.00 per month.

### Features

#### Interior

Bedrooms	1
Bathrooms	1

#### Exterior

Security	Yes
Pool	No

#### Sizes

Floor Size	76m <sup>2</sup>
------------	------------------

