



**Robin Lawrence**  
0814224787  
imaginesales01@gmail.com



**Abubakr Achmat**  
0614557025

imaginesales01@gmail.com

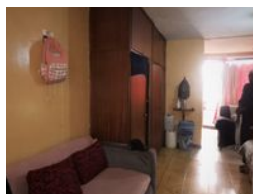
Contact Head Office (JHB,  
Pretoria, Cape Town and Garden  
Route)

+27 712982714

Unit 6 & 8 Rotherfield Trust  
23 Rotherfield Road  
Plumstead  
7800



Web Ref BR-43483



**R230,000**

 0.5  1

**Monthly Bond Repayment** R2,335.03

Calculated over 20 years at 10.75% with no deposit.

**Transfer Costs** R13,821.00 **Bond Costs** R9,510.00

These calculations are only a guide. Please ask your conveyancer for exact calculations.

**Monthly Levy** R1,589

**GREAT INVESTMENT OPPORTUNITY WHETHER YOU ARE LOOKING AT STARTING OR EXPANDING YOUR PORTFOLIO!!!**

40sqm bachelor apartment consisting of lounge, kitchen, bathroom and sunny open balcony.

The block is very well secured with 24hr security and security access gate.

The location of the building is ideal and makes it a great investment as it's a sought after location for tenants and very high in demand.

The building is very popular with tenants as it is closely located to all amenities such as Bertram's filling station, Gautrain bus stop, Gautrain railway station, Donal Gordon hospital, police station, Sheik Anta Diop primary school, Highpoint shopping centre and the UJ.

Levy - R824.98  
CSOS Levy - R6.50  
Water fixed - R200  
Sewerage - R357.14  
Reserve Fund Levy - R200

## Features

### Interior

Bedrooms	0.5
Bathrooms	1
Recep. Rooms	0.5

### Exterior

Security	Yes
Pool	No

### Sizes

Floor Size	40m <sup>2</sup>
------------	------------------