



Robin Lawrence
0814224787
imaginesales01@gmail.com



Abubakr Achmat
0614557025

imaginesales01@gmail.com

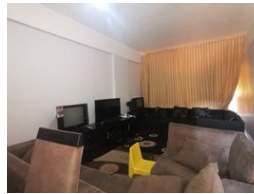
Contact Head Office (JHB, Pretoria, Cape Town and Garden Route)

+27 712982714

Unit 6 & 8 Rotherfield Trust
23 Rotherfield Road
Plumstead
7800



Web Ref BR-862013



R250,000

 1  1

Monthly Bond Repayment R2,580.47
Calculated over 20 years at 11% with no deposit.

Transfer Costs R13,821.00 **Bond Costs** R9,510.00
These calculations are only a guide. Please ask your conveyancer for exact calculations.

Monthly Levy R1,200

YOU DO NOT WANT TO MISS OUT ON THIS!!!

Large 67 sqm 1 Bedroom flat with built in cupboards, lounge, kitchen, bathroom with toilet and open balcony.

The toilet could use a lick of paint but other than that the unit is in an amazing condition.

Joselea Court is in good condition and strategically situated in the North Berea close to Louis Botha Avenue. The block is situated close to all amenities such as Johannesburg Girls Preparatory School, Barnato Park High School, Rand Clinic and Spar. The building benefits from secure parking and access security gate (tenants use tags for access and there is a security guard at night only).

Estimated Levy: R 1200 per month.

Potential Rental: R 3 400 – R 4 200 per month.

Features

Interior		Exterior		Sizes	
Bedrooms	1	Security	Yes	Floor Size	67m ²
Bathrooms	1	Pool	No		
Recep. Rooms	1				