



Abubakr Achmat
0614557025
imaginesales01@gmail.com



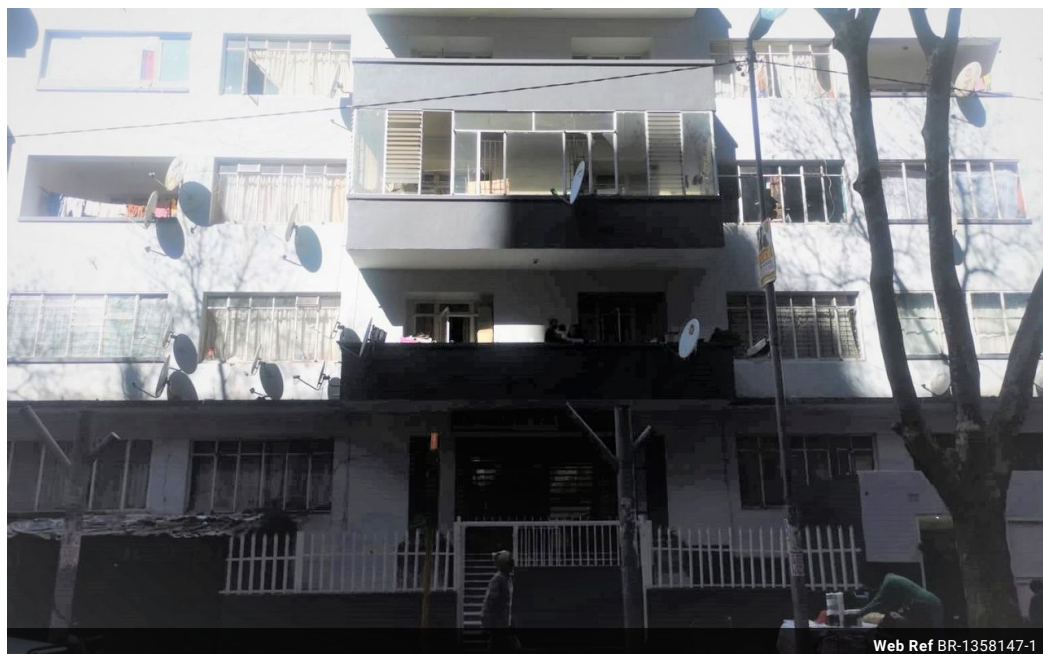
Robin Lawrence
0814224787

imaginesales01@gmail.com

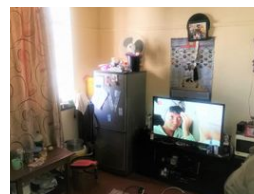
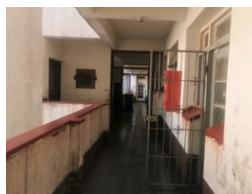
Contact Head Office (JHB,
Pretoria, Cape Town and Garden
Route)

+27 712982714

Unit 6 & 8 Rotherfield Trust
23 Rotherfield Road
Plumstead
7800



Web Ref BR-1358147-1



R235,000

2 1

Monthly Bond Repayment R2,385.79

Calculated over 20 years at 10.75% with no deposit.

Transfer Costs R13,821.00 **Bond Costs** R9,510.00

These calculations are only a guide. Please ask your conveyancer for exact calculations.

Monthly Levy R1,900

2 BEDROOM! GREAT INVESTMENT OPPORTUNITY!!!

This is the ideal investment opportunity, the unit sits at 86 sqm including 2 bedrooms, a nice open plan lounge, fitted kitchen, bathroom with a toilet, and open balcony.

The building is secure as it benefits from a security gate and 24hr security giving tenants and owners alike piece of mind.

The block is very well managed by AKA City Accomodations and also situated very centrally close to University of Johannesburg as well as Ellis Park stadium. Tenants are fond of the building due to it's close proximity to all major amenities such as Shoprite, the Police station, and main taxi and bus routes.

Estimated monthly levy: R 1900

Potential Rental: R 5500

Features

Interior

Bedrooms	2
Bathrooms	1
Recep. Rooms	1

Exterior

Carports / Parkings	1
Security	Yes
Pool	No

Sizes

Floor Size	86m²
------------	------