



Robin Lawrence
0814224787
imaginesales01@gmail.com



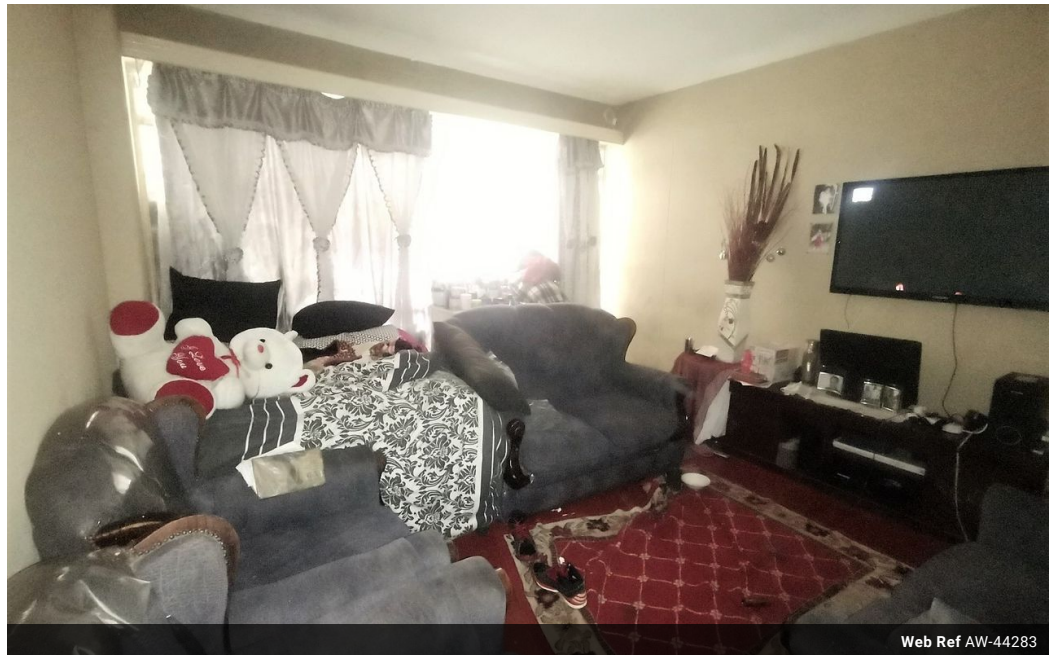
Abubakr Achmat
0614557025

imaginesales01@gmail.com

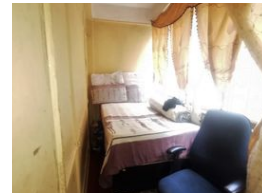
Contact Head Office (JHB,
Pretoria, Cape Town and Garden
Route)

+27 712982714

Unit 6 & 8 Rotherfield Trust
23 Rotherfield Road
Plumstead
7800



Web Ref AW-44283



R205,000

 1  1

Monthly Bond Repayment R2,081.22

Calculated over 20 years at 10.75% with no deposit.

Transfer Costs R13,821.00

Bond Costs R9,510.00

These calculations are only a guide. Please ask your conveyancer for exact calculations.

Monthly Levy R1,882

AN IDEAL PROPERTY FOR THE AVID INVESTOR!!

Here we have a neat and spacious 81sqm apartment that comes complete with a large bedroom with built in cupboards, fitted kitchen, large living/dining area that has been partitioned to generate maximum rental income and a bathroom with separate toilet. The unit also benefits from an open balcony.

The building is situated on the corner of Tudhope Avenue and Prospect road. it is well managed and maintained by PAL Property managing agents. The building is very closely situated to all the major amenities and the main bus and taxi routes. This making it very popular with tenants as well.

Estimated monthly levy: R 1882

Estimated monthly rental income: R 4 500 - R 6 000

Features

Interior		Exterior		Sizes	
Bedrooms	1	Security	Yes	Floor Size	81m²
Bathrooms	1	Pool	No		
Recep. Rooms	0.5				