



Abubakr Achmat
0614557025
imaginesales01@gmail.com



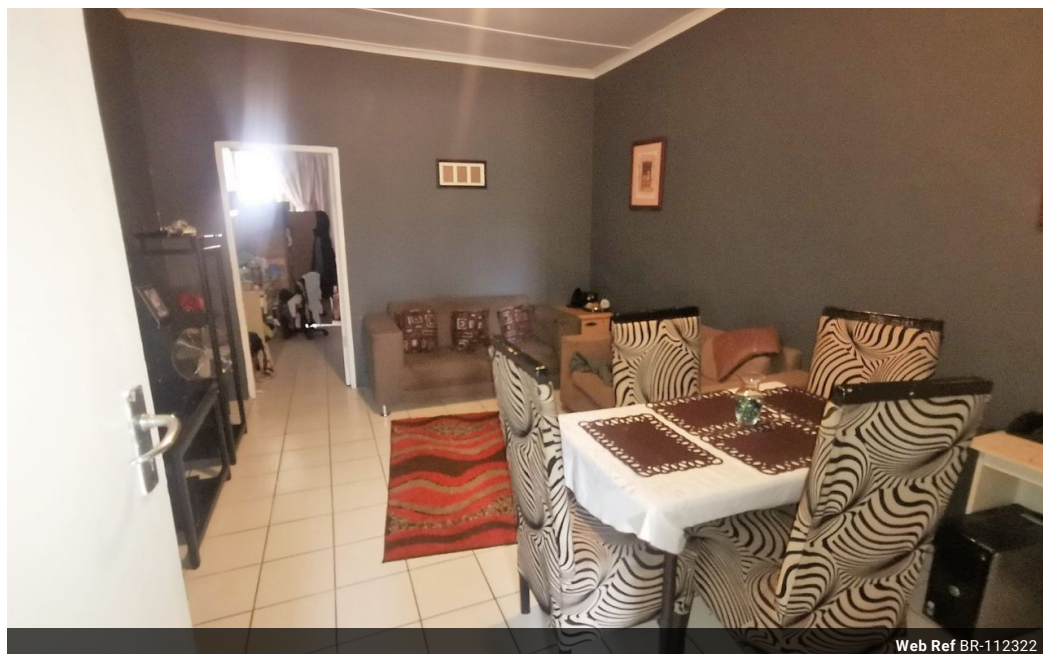
Robin Lawrence
0814224787

imaginesales01@gmail.com

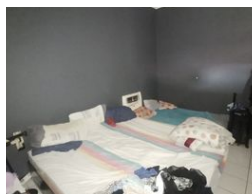
Contact Head Office (JHB,
Pretoria, Cape Town and Garden
Route)

+27 712982714

Unit 6 & 8 Rotherfield Trust
23 Rotherfield Road
Plumstead
7800



Web Ref BR-112322



R350,000

🛏 2 🚿 1.5 🚗 1

Monthly Bond Repayment R3,612.66

Calculated over 20 years at 11% with no deposit.

Transfer Costs R16,346.00 **Bond Costs** R11,560.00

These calculations are only a guide. Please ask your conveyancer for exact calculations.

Monthly Levy R1,032

FULLY RENOVATED CONVERTED TO 3 BEDROOM!!!

98 sqm 2 converted to 3 bedroom flat with built in cupboards that flows out to a sunny open balcony for your entertainment. The unit is made up of an open lounge area, fitted kitchen, bathroom with bath and separate toilet with shower.

It has a high potential for any investor looking to maximize on rental yield, also perfect for a someone looking for a great start-up home.

The building is located on St. Georges Road in Bellevue which is quite close to the 'high in demand' Louise Botha Avenue. The block is situated close to Shoprite, King Edward Primary School and all major amenities and major bus and taxi routes.

Levy: R 1 032.11 per month.

Estimated Rental: R 4 900 – R 5 200 per month.

Features

Interior

Bedrooms	2
Bathrooms	1.5
Recep. Rooms	1

Exterior

Garages	1
Security	Yes
Pool	No

Sizes

Floor Size	98m²
------------	------