



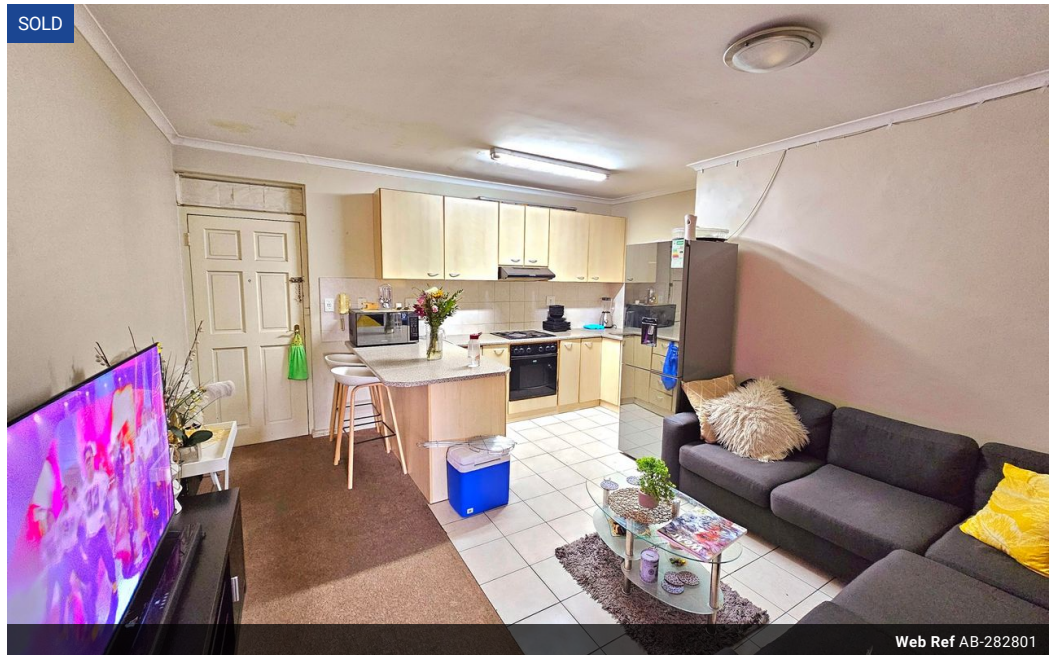
Candice Bergh
0678761811
imaginesales16@gmail.com

Contact Head Office (JHB,
Pretoria, Cape Town and Garden
Route)

+27 712982714

Unit 6 & 8 Rotherfield Trust
23 Rotherfield Road
Plumstead
7800

SOLD



Web Ref AB-282801



R685,000

1 1

Monthly Bond Repayment R6,954.32

Calculated over 20 years at 10.75% with no deposit.

Transfer Costs R23,730.00 **Bond Costs** R17,680.00

These calculations are only a guide. Please ask your conveyancer for exact calculations.

Monthly Levy R1,524 **Monthly Rates** R125

Priced to sell!! Excellent investment!! - Sole Mandate

This 1-bedroom apartment, located in a well-managed complex, offers a fantastic opportunity for first-time buyers or investors. The spacious bedroom comes with built-in cupboards, while the open-plan kitchen and lounge create a comfortable living space.

Open balcony for those hot summer days. Bathroom with separate shower and bath.

Situated in a prime location, close to schools, shops, public transport, and other essential amenities, convenience is at your doorstep.

The building is safe and secure with 24-hour security, ensuring peace of mind. The apartment is in fair condition and could use some minor touch ups.

Priced to sell fast—don't miss out on this great deal!

Viewing by appointment only!!

Features

Interior

Bedrooms	1
Bathrooms	1
Recep. Rooms	1
Furnished	No

Exterior

Carports / Parkings	1
Security	Yes
Pool	No

Sizes

Floor Size	54m²
------------	------