



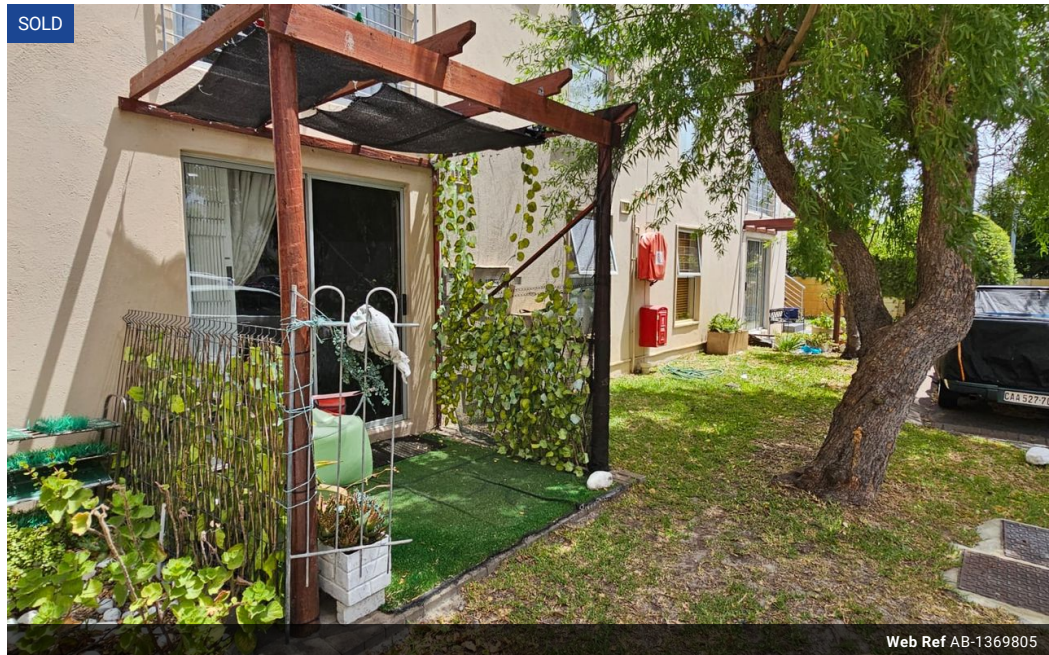
Candice Bergh
 0678761811
 imaginesales16@gmail.com

Contact Head Office (JHB,
 Pretoria, Cape Town and Garden
 Route)

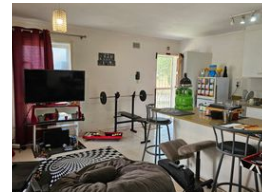
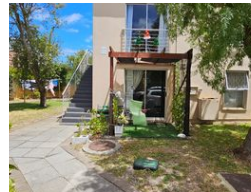
+27 712982714

Unit 6 & 8 Rotherfield Trust
 23 Rotherfield Road
 Plumstead
 7800

SOLD



Web Ref AB-1369805



R895,000

1 1

Monthly Bond Repayment R9,086.30

Calculated over 20 years at 10.75% with no deposit.

Transfer Costs R28,244.00 **Bond Costs** R21,450.00

These calculations are only a guide. Please ask your conveyancer for exact calculations.

Monthly Levy R1,553 **Monthly Rates** R209

Ground floor apartment with garden and communal pool/tennis courts

Priced to sell quick - One of the most sought after complexes in Diep River. The stunning family friendly complex offers a communal swimming pool and tennis courts. Safety is a priority with 24 hr security guards.

Located on the border of Diep River and Plumstead makes this the perfect location with easy access to the M3 and M5. Diep River Train Station within walking distance. Close to 3 Arts Shopping Centre, Meadowridge Shopping Centre and local schools.

Open plan kitchen with spacious lounge leading to outside garden area. The bedroom has an en suite bathroom with shower/bath.

For those buy to let investors looking for good capital growth and a solid investment the apartment can be rented out for around R8500 per month.

The apartment is in fair condition and could use some touch ups.

At this price its a...

Features

Interior

Bedrooms	1
Bathrooms	1
Recep. Rooms	1
Furnished	No

Exterior

Carports / Parkings	1
Security	Yes
Pool	Yes

Sizes

Floor Size	41m²
------------	------

